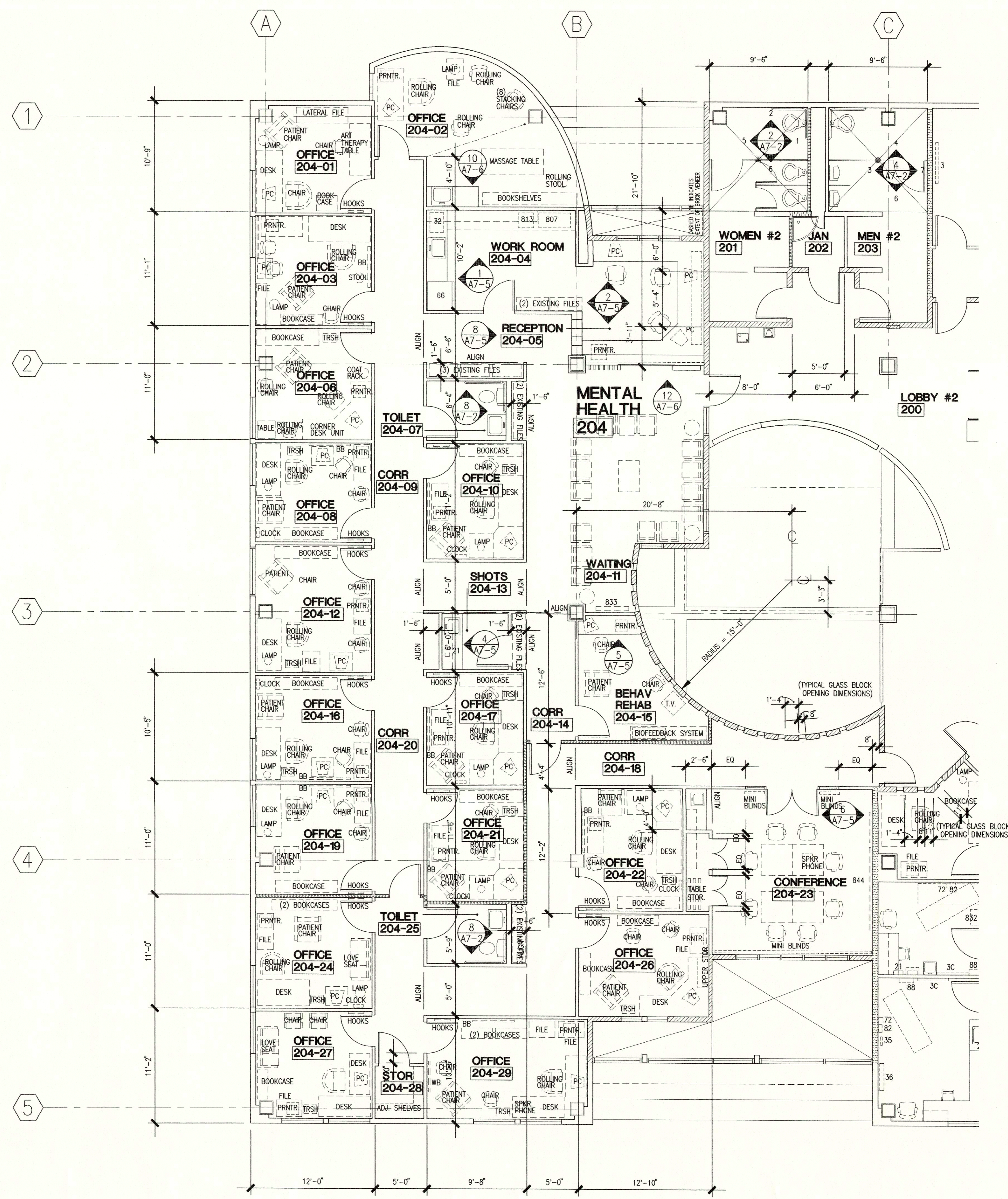


KOONCE P E
 ARCHITECTURE PLANNING AND INTERIOR DESIGN
 745 6th AVENUE SUITE 400 ANCHORAGE, ALASKA 99501
 OFFICE (907) 574-7443 FAX (907) 574-7497 INCORPORATED

NEESER CONSTRUCTION INC.
 2501 Blueberry, Anchorage, Alaska 99503
 Office (907) 276 1058 FAX (907) 276 8533

Anchorage Native Medical Office Building
 ANCHORAGE ALASKA

REVISIONS	8/2/96
JOB NO.	95069
DATE	4/30/96
DRAWN	TR
REVIEWED	GLW
SECOND FLOOR WEST SIDE T. I. PLAN	
SHEET NO.	A2-6
	OF 13



WALL LEGEND

WALLS SHOWN WITH BATT INSULATION INDICATE FULL HEIGHT NON RATED SOUND AND SECURITY WALLS OUT OF 6" OR 3-5/8" METAL STUDS WITH 5/8" GYPSUM WALLBOARD ON EACH SIDE AND FULL THICK BATT INSULATION

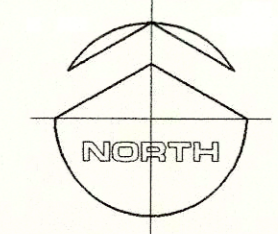
HATCHED WALLS INDICATE FULL HEIGHT ONE HOUR CONSTRUCTION OUT OF 6" OR 3-5/8" METAL STUDS WITH 5/8" GYPSUM WALLBOARD ON EACH SIDE (GYPSUM ASSOCIATION File No. WP 1200)

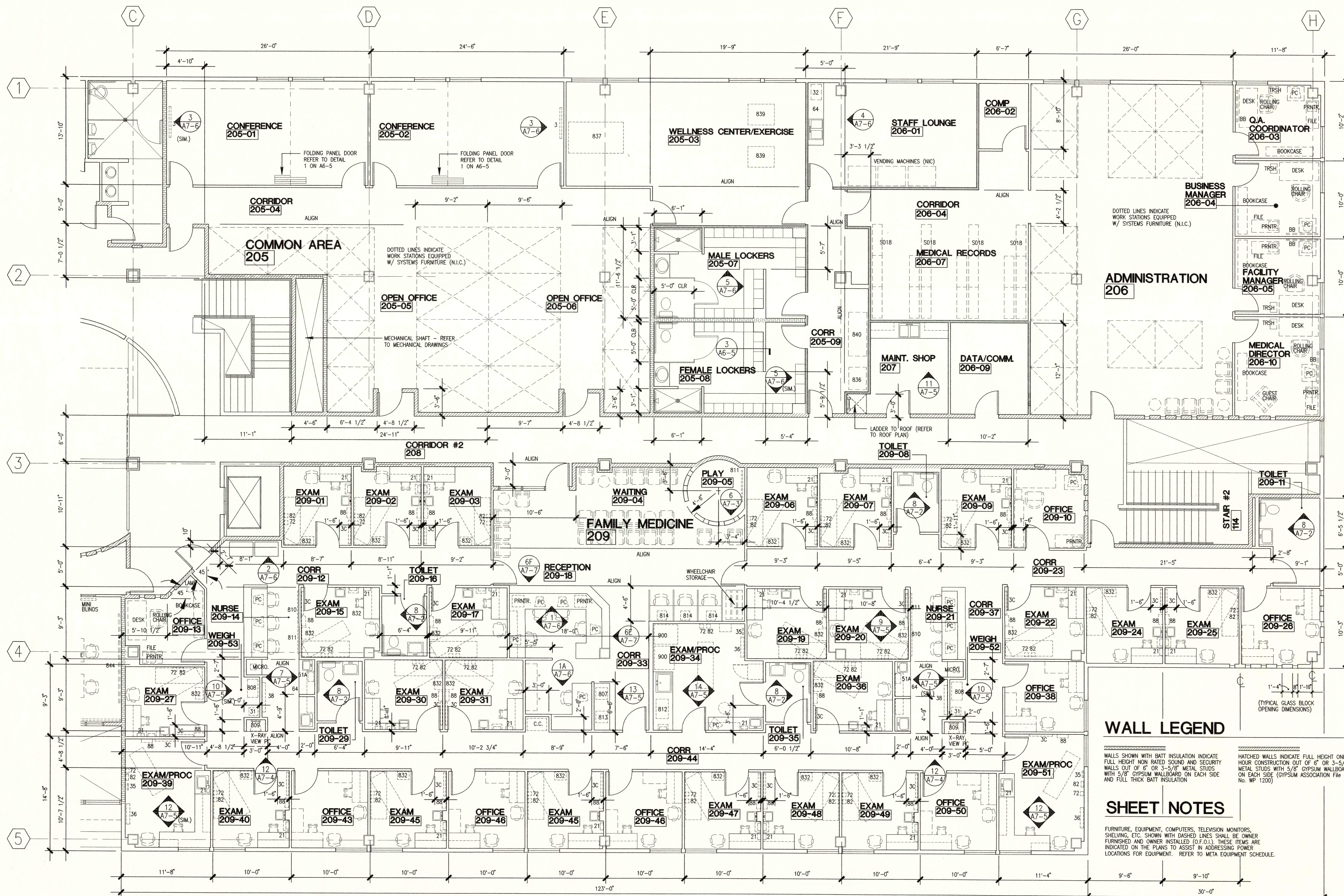
SHEET NOTES

FURNITURE, EQUIPMENT, COMPUTERS, TELEVISION MONITORS, SHELVING, ETC. SHOWN WITH DASHED LINES SHALL BE OWNER FURNISHED AND OWNER INSTALLED (O.F.O.I.). THESE ITEMS ARE INDICATED ON THE PLANS TO ASSIST IN ADDRESSING POWER LOCATIONS FOR EQUIPMENT. REFER TO META EQUIPMENT SCHEDULE.

SECOND FLOOR WEST SIDE TENANT IMPROVEMENT PLANS

SCALE: 3/16" = 1'-0"





WALL LEGEND

WALLS SHOWN WITH BATT INSULATION INDICATE FULL HEIGHT NON RATED SOUND AND SECURITY WALLS. OUT OF 6" OR 3-5/8" METAL STUDS WITH 5/8" GYPSUM WALLBOARD ON EACH SIDE AND FULL THICK BATT INSULATION

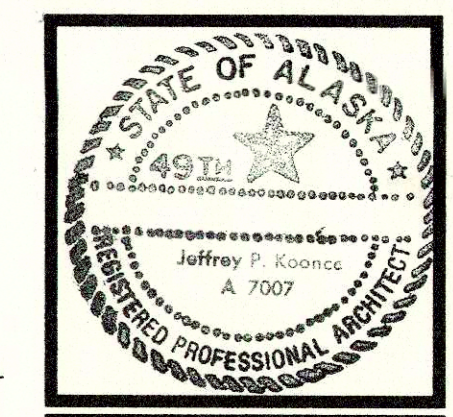
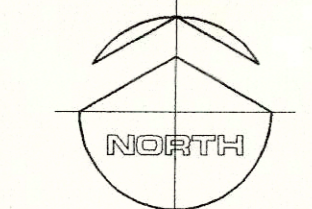
HATCHED WALLS INDICATE FULL HEIGHT ONE HOUR CONSTRUCTION OUT OF 6" OR 3-5/8" METAL STUDS WITH 5/8" GYPSUM WALLBOARD ON EACH SIDE (GYPSUM ASSOCIATION File No. WP 1200)

SHEET NOTES

FURNITURE, EQUIPMENT, COMPUTERS, TELEVISION MONITORS, SHELVING, ETC. SHOWN WITH DASHED LINES SHALL BE OWNER FURNISHED AND OWNER INSTALLED (O.F.O.I.). THESE ITEMS ARE INDICATED ON THE PLANS TO ASSIST IN ADDRESSING POWER LOCATIONS FOR EQUIPMENT. REFER TO META EQUIPMENT SCHEDULE.

SECOND FLOOR EAST SIDE TENANT IMPROVEMENT PLANS

SCALE: 3/16" = 1'-0"



KOONCE
ARCHITECTURE PLANNING AND INTERIOR DESIGN
7400A AVENUE SUITE 400 ANCHORAGE, ALASKA 99501
(907) 274-7443 FAX (907) 274-7407 INCORPORATED

NEESER CONSTRUCTION INC.
2501 Blueberry, Anchorage, Alaska 99503
Office (907) 276 1058 FAX (907) 276 8533

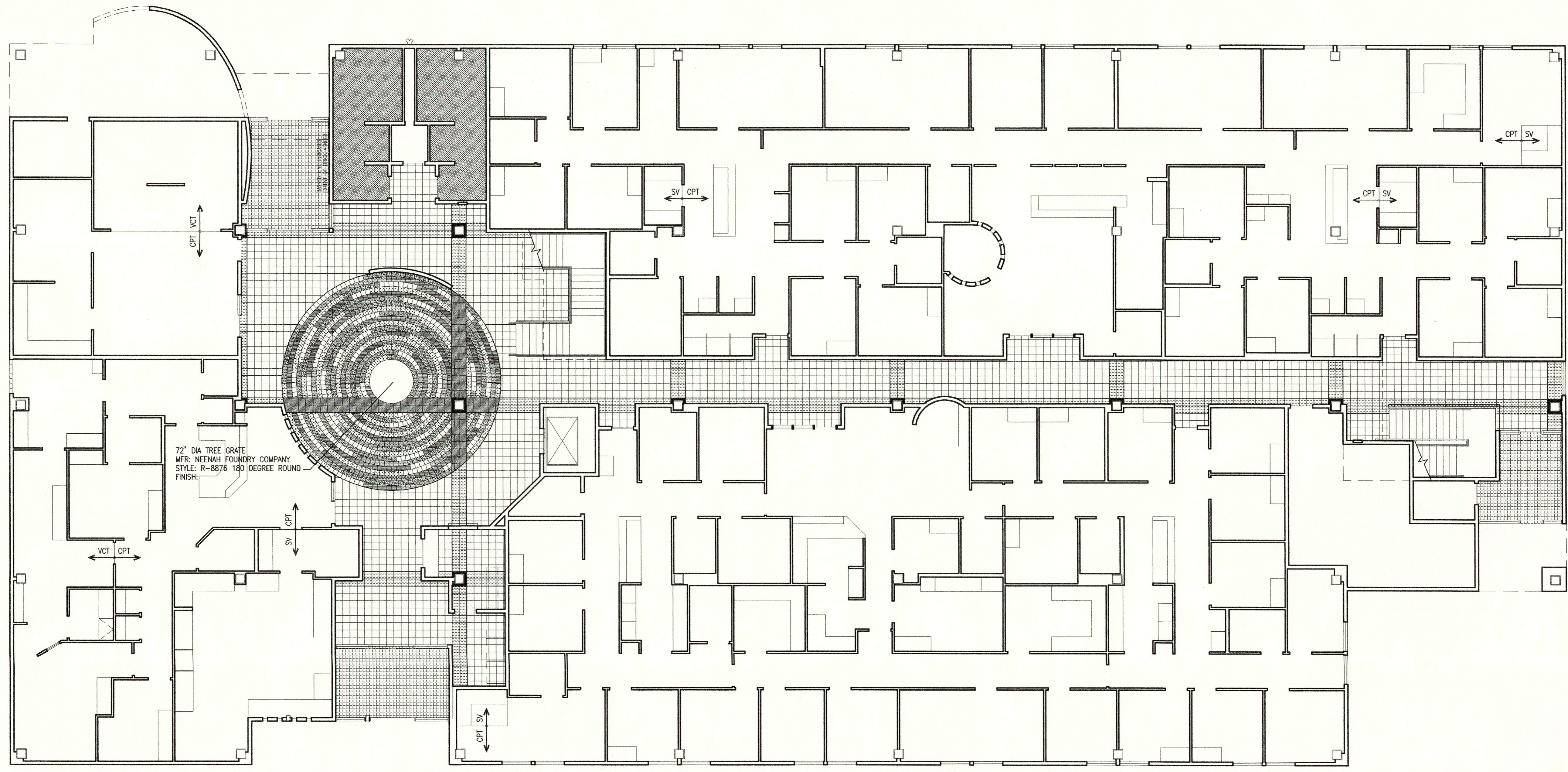
Anchorage Native Medical Office Building
ANCHORAGE ALASKA

8/2/96

JOB NO. 95069
DATE 4/30/96
DRAWN TR
REVIEWED GLW

SECOND FLOOR EAST SIDE T. I. PLANS

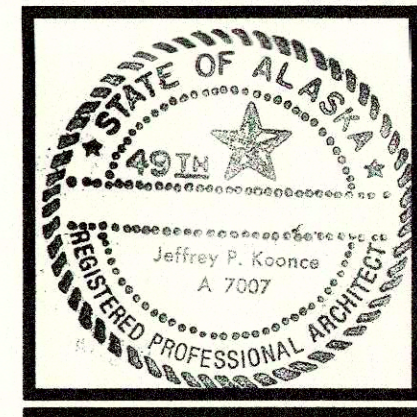
SHEET NO. **A2-7**
OF 13



72" DIA TREE GRATE
MFR: NENAH FOUNDRY COMPANY
STYLE: R-8876 180 DEGREE ROUND
FINISH:

1 FIRST FLOOR - FOOR FINSH PLAN
SCALE

- | | | | |
|---|---|---|--|
| 8" x 8" PORCELAIN TILE
MFR: CROSSVILLE CERAMICS
FINISH: UNPOLISHED (UP)
CROSS-SHEEN(UPS) | 12" x 12" PORCELAIN TILE
MFR: CROSSVILLE CERAMICS
FINISH: UNPOLISHED (UP)
CROSS-SHEEN(UPS) | ENTRY MATTING
TIREX - ROLL | 2 1/16" x 2 1/16" PORCELAIN CERAMIC MOSAIC TILE
MFR: DAL-TILE |
| TERRA ROSATA A634 (UPS) | WHITE SPICE A266 (UP) | INSTALL 12" WIDE ROLL
RUNNING EAST TO WEST | DK-147 BUFF STONE |
| SANDALWOOD A670 (UPS) | FLAX A236 (UPS) | | |
| PEACH SAND A320 (UPS) | MAPLE SUGAR A360 (UPS) | | |
| BAMBOO A310 (UPS) | SAND BISQUE A233 (UP) | | |
| GLACIER A210 (UPS) | | | |



KOONCE P E P P E R
ARCHITECTURE PLANNING AND INTERIOR DESIGN
745 4th AVENUE SUITE 400 ANCHORAGE, ALASKA 99501
(907) 574-7448 FAX (907) 574-7407 INCORPORATED

NDI NEESER CONSTRUCTION INC.
2501 Blueberry, Anchorage, Alaska 99503
Office (907) 276 1058 FAX (907) 276 8533

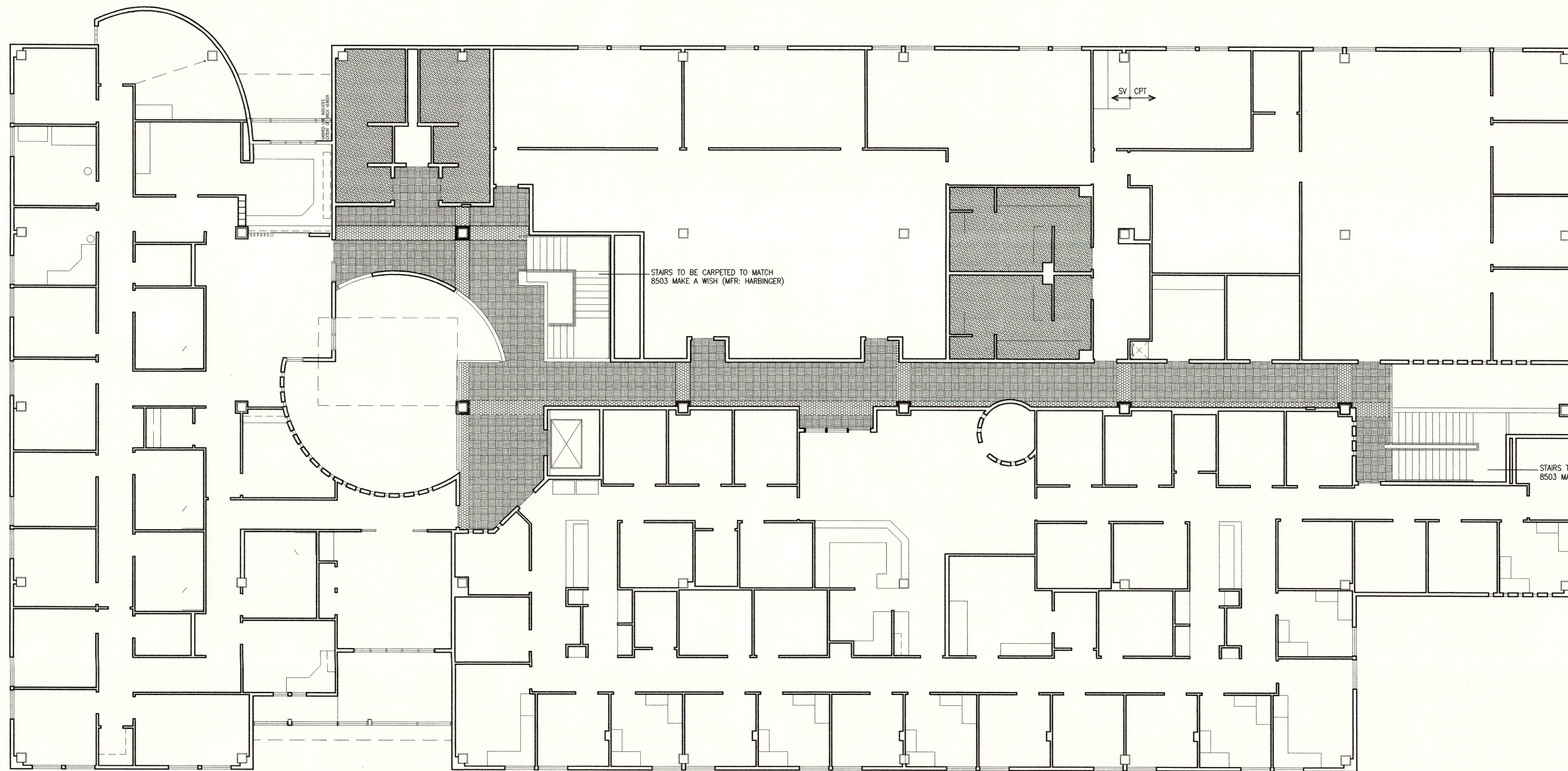
Anchorage Native Medical Office Building
ANCHORAGE ALASKA

REVISIONS
8/2/96
DRAWING PATH: \SPROVA\80201\80201.dwg

JOB NO. 95069
DATE 4/30/96
DRAWN BW
REVIEWED GLW

FIRST FLOOR FINISH PLAN

SHEET NO. **A2-8**
OF 13



12" x 12" PORCELAIN TILE
MFR: CROSSVILLE CERAMICS
FINISH: UNPOLISHED (UP)
CROSS-SHEEN (UPS)

2 1/16" x 2 1/16" PORCELAIN
CERAMIC MOSAIC FLOOR TILE
MFR: DAL-TILE

CARPET
MFR: HARBINGER
STYLE: FANTASIA

WHITE SPICE (UP)
A266

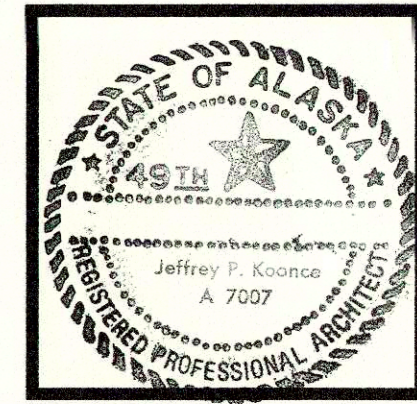
DK-147 BUFF STONE

8503 MAKE A WISH

8545 IVORY TOWER

1 SECOND FLOOR - FLOOR FINISH PLAN

1/8" = 1'-0"



KOONCE P E R F E R E N T
ARCHITECTURE PLANNING AND INTERIOR DESIGN
745 4th AVENUE SUITE 400 ANCHORAGE, ALASKA 99501
(907) 574-7443 FAX (907) 574-7407 INCORPORATED

NEESER CONSTRUCTION INC.
NCI
2501 Blueberry, Anchorage, Alaska 99503
Office (907) 276 1058 FAX (907) 276 8533

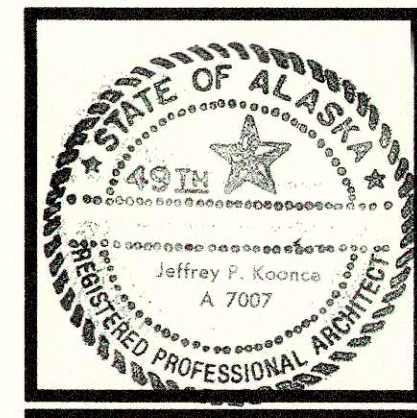
**Anchorage Native Medical
Office Building**
ANCHORAGE ALASKA

REVISIONS
8/2/96
DRAWING PATH: J:\95PRQ\A
PROJECT: 95-069-3

JOB NO. 95069
DATE 4/30/96
DRAWN BW
REVIEWED GLW

**SECOND FLOOR
FINISH PLAN**

SHEET NO.
A2-9
OF 13



KOONCE
ARCHITECTURE PLANNING AND INTERIOR DESIGN
740 4th AVENUE SUITE 400 ANCHORAGE, ALASKA 99501
(907) 574-7443 FAX (907) 574-7407 INCORPORATED

NEESER CONSTRUCTION INC.
2001 Blueberry, Anchorage, Alaska 99503
Office (907) 276 1058 FAX (907) 276 8533

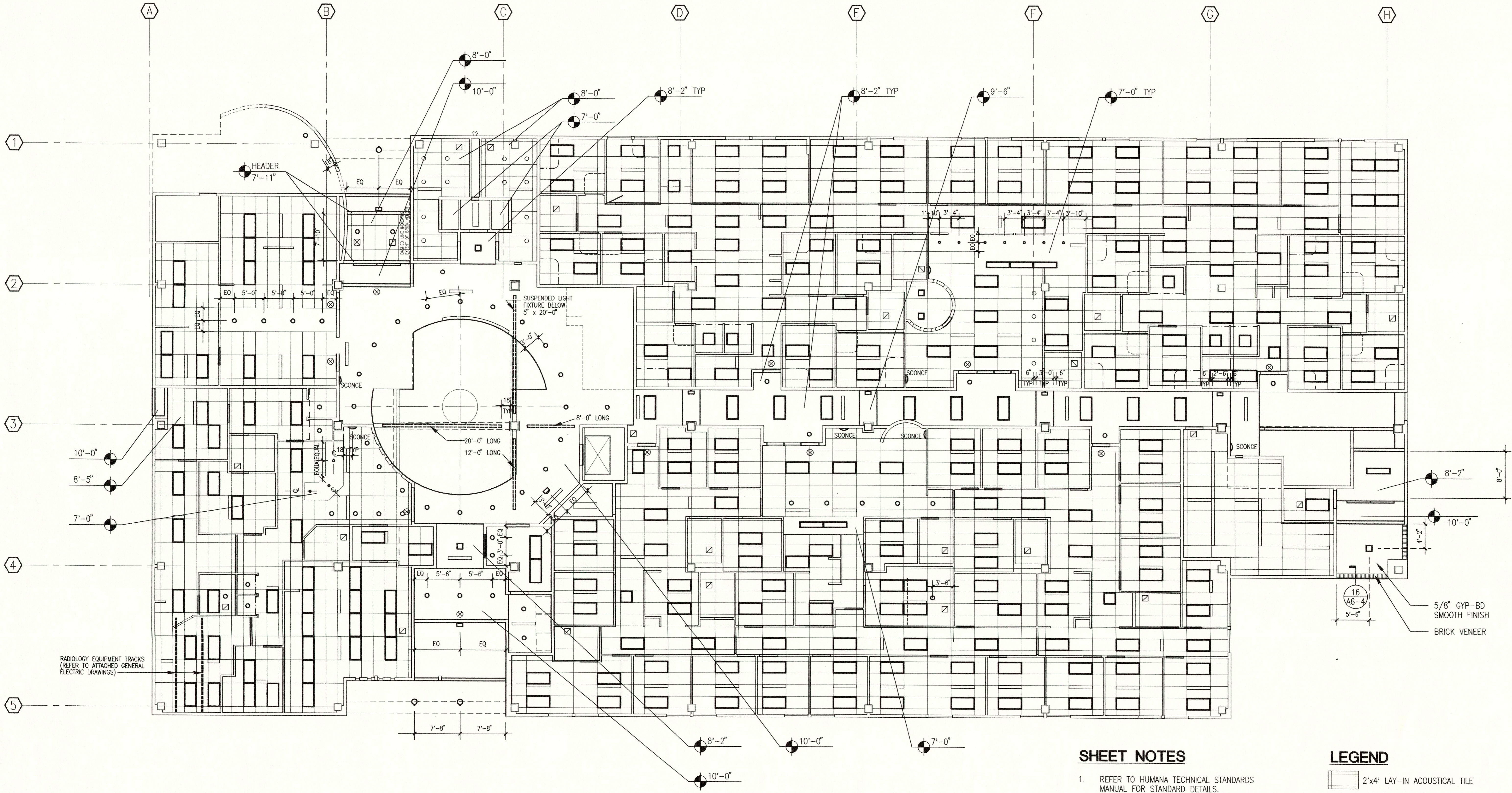
Anchorage Native Medical Office Building
ANCHORAGE ALASKA

REVISIONS
8/2/96
DESIGNED BY: JF/KS/PC/A
5/26/96, 6/14/96, 10/10/96

JOB NO. 95069
DATE 4/30/96
DRAWN JCB
REVIEWED GLW

REFLECTED CEILING PLAN

SHEET NO. **A2-10**
OF 13



SHEET NOTES

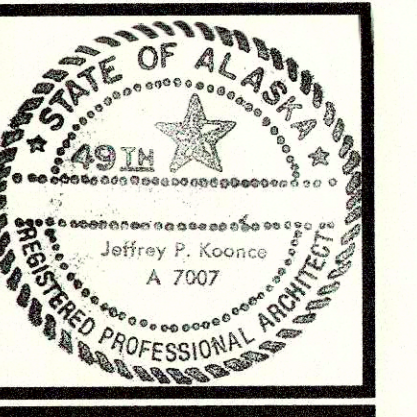
- REFER TO HUMANA TECHNICAL STANDARDS MANUAL FOR STANDARD DETAILS.

LEGEND

- 2'x4' LAY-IN ACOUSTICAL TILE
- GYP-BD SMOOTH FINISH
- 2'x4' FLUORESCENT FIXTURE
- FLUORESCENT STRIP FIXTURE
- WALL WASHER FIXTURE
- 12'x12' FLUORESCENT FIXTURE
- GLOBE FIXTURE
- WALL SCONCE
- RECESSED DOWN LIGHT
- SMALL APERTURE LIGHT
- EXIT LIGHT
- SUPPLY DIFFUSER
- RETURN

FIRST LEVEL REFLECTED CEILING PLAN

1/8" = 1'-0"



KOONCE
ARCHITECTURE PLANNING AND INTERIOR DESIGN
740 4th AVENUE SUITE 400 ANCHORAGE, ALASKA 99501
(907) 574-7448 FAX (907) 574-7407 INCORPORATED
A 7907
JEFFREY P. KOOSKA
REGISTERED PROFESSIONAL ARCHITECT

NEESER CONSTRUCTION INC.
2501 Blueberry, Anchorage, Alaska 99503
Office (907) 276 1058 FAX (907) 276 8533

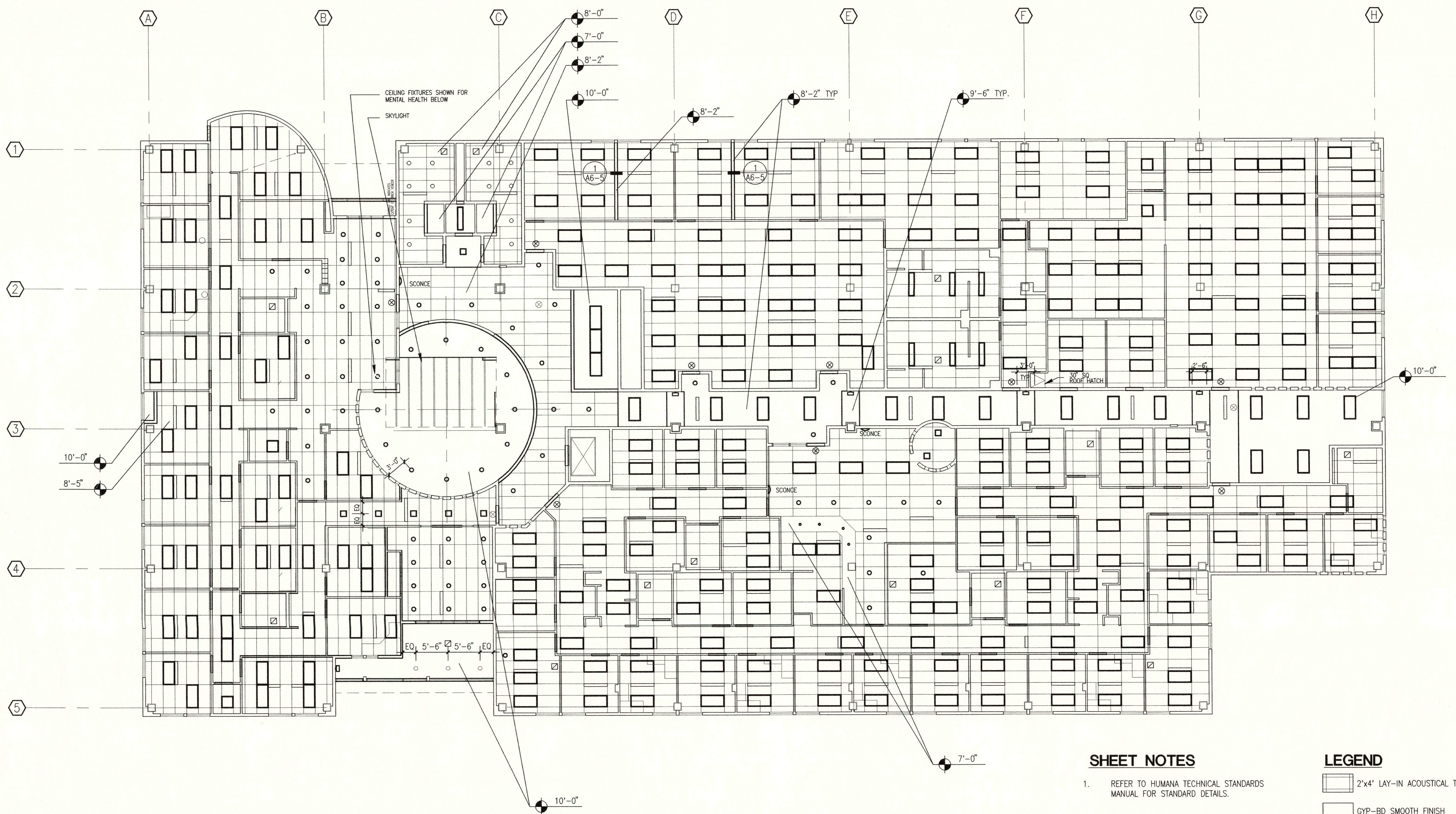
Anchorage Native Medical
Office Building
ANCHORAGE ALASKA

REVISIONS
8/2/96
DRAWING PATH: \A\SPROVA\95069\95069-11

JOB NO. 95069
DATE 4/30/96
DRAWN JCB
REVIEWED GLW

REFLECTED
CEILING PLAN

SHEET NO.
A2-11
OF 13



SHEET NOTES

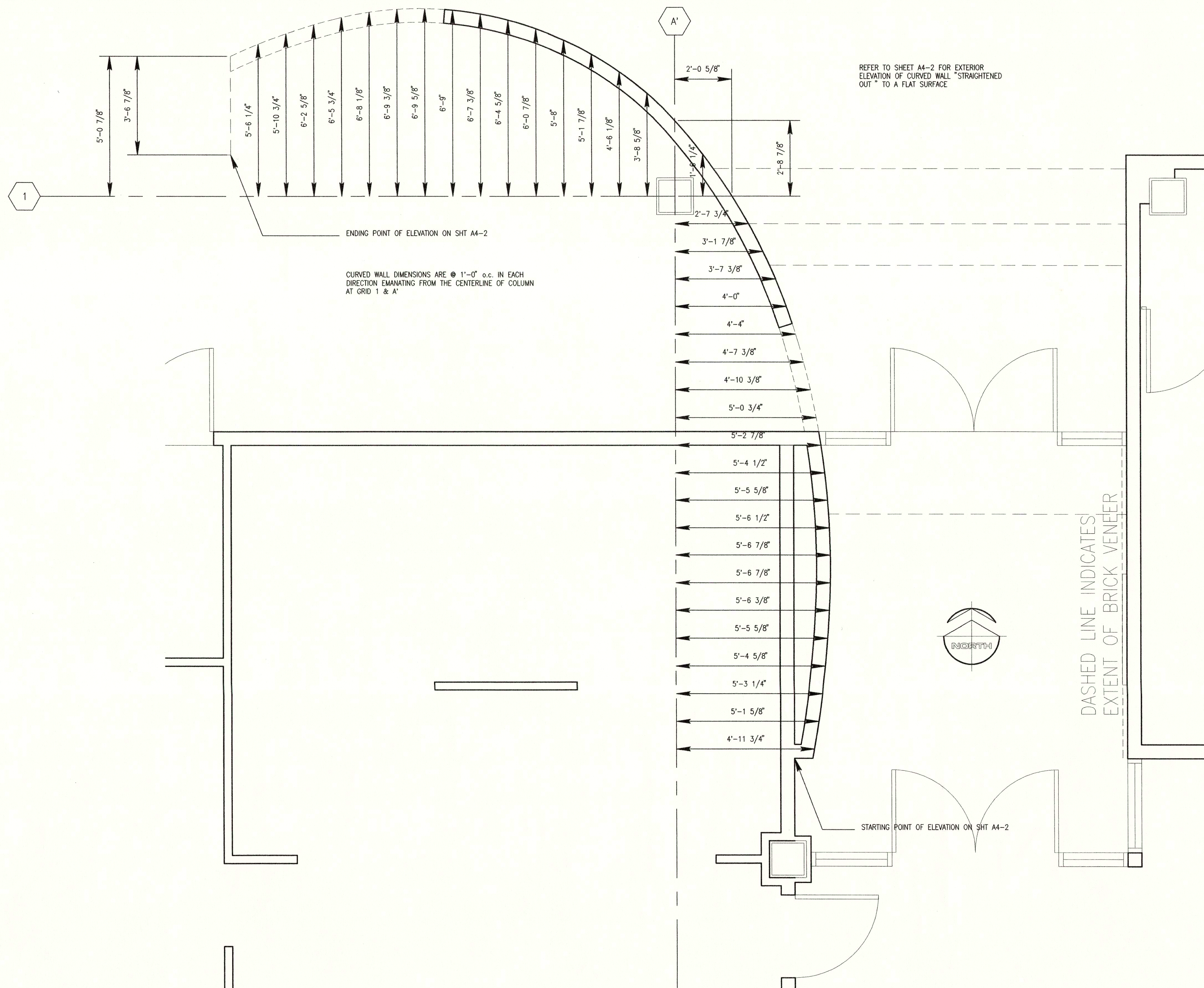
1. REFER TO HUMANA TECHNICAL STANDARDS MANUAL FOR STANDARD DETAILS.

LEGEND

- ◻ 2'x4' LAY-IN ACOUSTICAL TILE
- ◻ GYP-BD SMOOTH FINISH
- ◻ 2'X4' FLUORESCENT FIXTURE
- ◻ FLUORESCENT STRIP FIXTURE
- ◻ WALL WASHER FIXTURE
- ◻ 12"X12" FLUORESCENT FIXTURE
- ◉ GLOBE FIXTURE
- ◻ WALL SCONCE
- ◉ RECESSED DOWN LIGHT
- ◉ SMALL APERTURE LIGHT
- ◉ EXIT LIGHT
- ◻ SUPPLY DIFFUSER
- ◻ RETURN

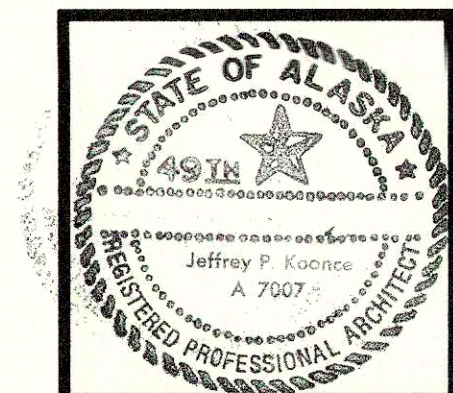
SECOND LEVEL REFLECTED CEILING PLAN

1/8" = 1'-0"



ENLARGED PLAN OF CURVED WALL AT NORTH ENTRANCE

1/2" = 1'-0"



KOONEC P E R R E R
 ARCHITECTURE PLANNING AND INTERIOR DESIGN
 745 NB AVENUE SUITE 400 ANCHORAGE, ALASKA 99501
 (907) 274-7443 FAX (907) 274-7467 INCORPORATED

NDI NEESEER CONSTRUCTION INC.
 2501 Blueberry, Anchorage, Alaska 99503
 Office (907) 276 1058 FAX (907) 276 8533

Anchorage Native Medical Office Building
 ANCHORAGE ALASKA

REVISIONS
 8/2/96

JOB NO. 95069
 DATE 4/30/96
 DRAWN RHM
 REVIEWED GLW

ENLARGED PLAN OF CURVED WALL

SHEET NO. **A2-12**
 OF 13