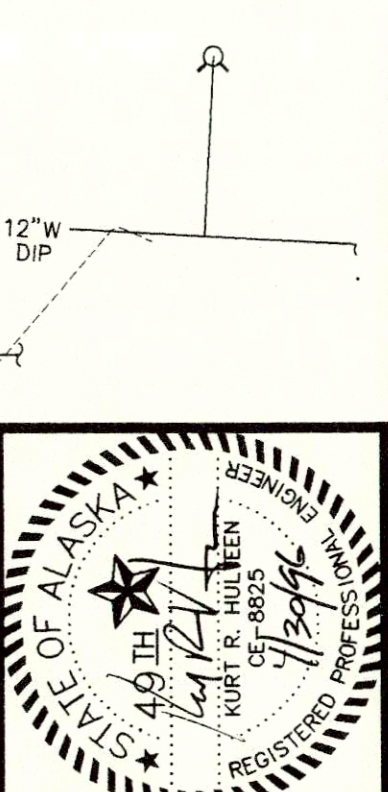


FILENAME: D:\6\6\2\2\1\CAD\DWG\10001\10001.DWG  
 SCRIPT FILE: SITE\_SDR  
 SHEET: 10001  
 CREATED: FEB 14 1996 12:00:10  
 UPDATED: JUN 03 1996 16:06:45 (0903)  
 PLOTTED: JUN 03 1996 16:09:27  
 PROJECT: ANCHORAGE NATIVE MEDICAL OFFICE BUILDING



**ADOWL ENGINEERS**  
 ARCHITECTURE PLANNING AND INTERIOR DESIGN  
 745 4th AVENUE SUITE 400 ANCHORAGE, ALASKA 99501  
 (907) 574-7445 FAX (907) 574-7400

**NDI**  
 NEESER CONSTRUCTION INC.  
 2501 Blueberry, Anchorage, Alaska 99503  
 Office (907) 276 1058 FAX (907) 276 8533

**Anchorage Native Medical Office Building**  
 ANCHORAGE ALASKA

REVISIONS  
 1. 6/3/96 REVIEW COMMENTS  
 JOB NO. 95069  
 DATE 6/4/96 4/30/96  
 DRAWN GLB  
 REVIEWED KRH  
**SITE GRADING AND UTILITY PLAN**  
 SHEET NO. **C2** OF

**1**  
**C2**  
**4" PVC LANDSCAPE MAINTENANCE CONDUIT**  
 NTS  
 GRAPHIC SCALE  
 1" = 20'  
**TRACT C2, TUDOR CENTRE SUBDIVISION**

SEE SHEET C1 FOR NOTES AND LEGEND





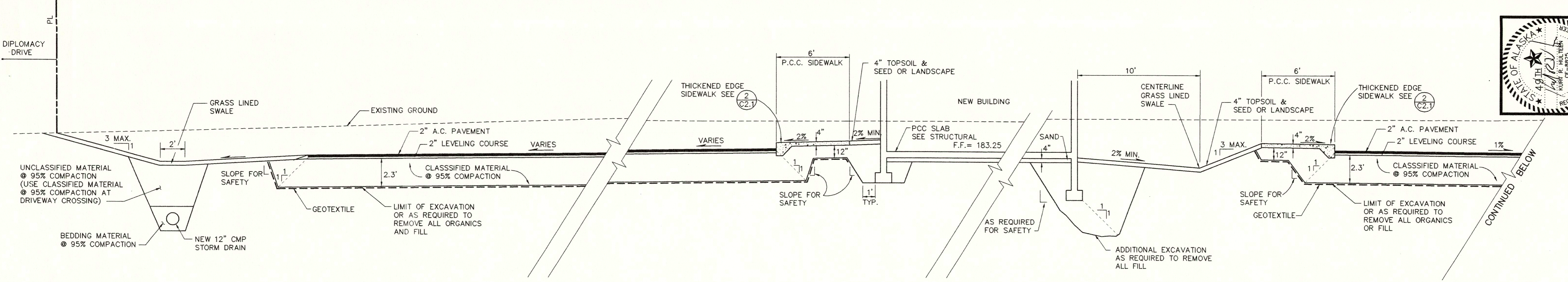
**ADOWL ENGINEERS**  
 ARCHITECTURE PLANNING AND INTERIOR DESIGN  
 745 HA AVENUE SUITE 400 ANCHORAGE, ALASKA 99501  
 (907) 874-7445 FAX (907) 874-7467 INCORPORATED

**NCD NEESER CONSTRUCTION INC.**  
 2501 Blueberry, Anchorage, Alaska 99503  
 Office (907) 276 1058 FAX (907) 276 8528

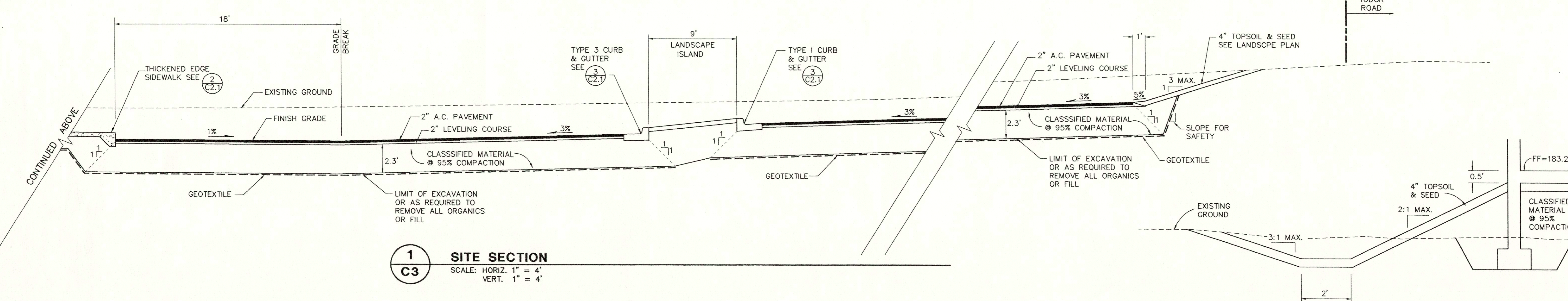
**Anchorage Native Medical Office Building**  
 ANCHORAGE ALASKA

REVISIONS  
 1. 6/3/96 REVIEW COMMENTS  
 JOB NO. 95069  
 DATE 6/4/96 4/30/96  
 DRAWN GLB  
 REVIEWED KRH

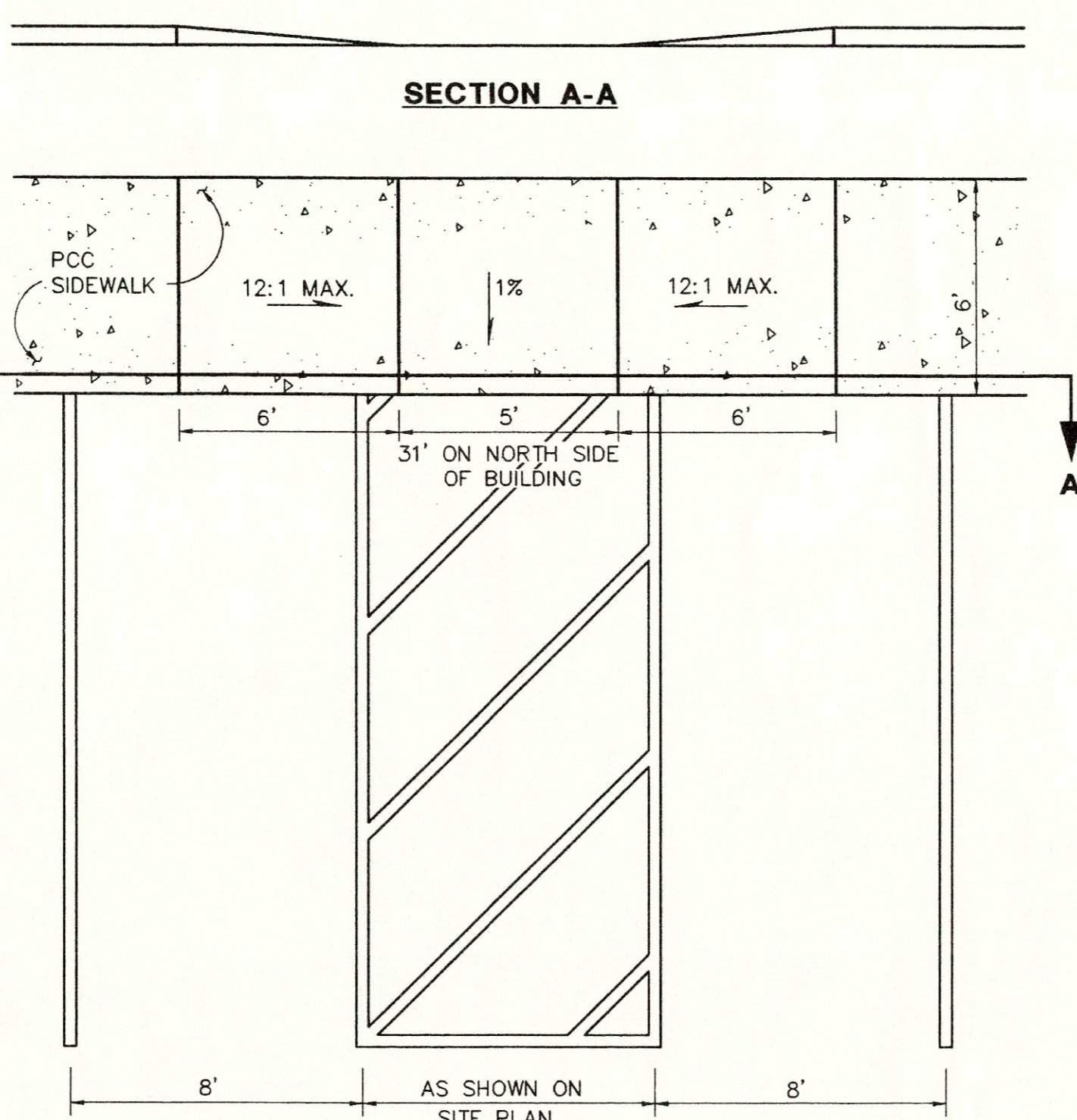
**SITE SECTIONS AND DETAILS**  
 SHEET NO. **C3** OF



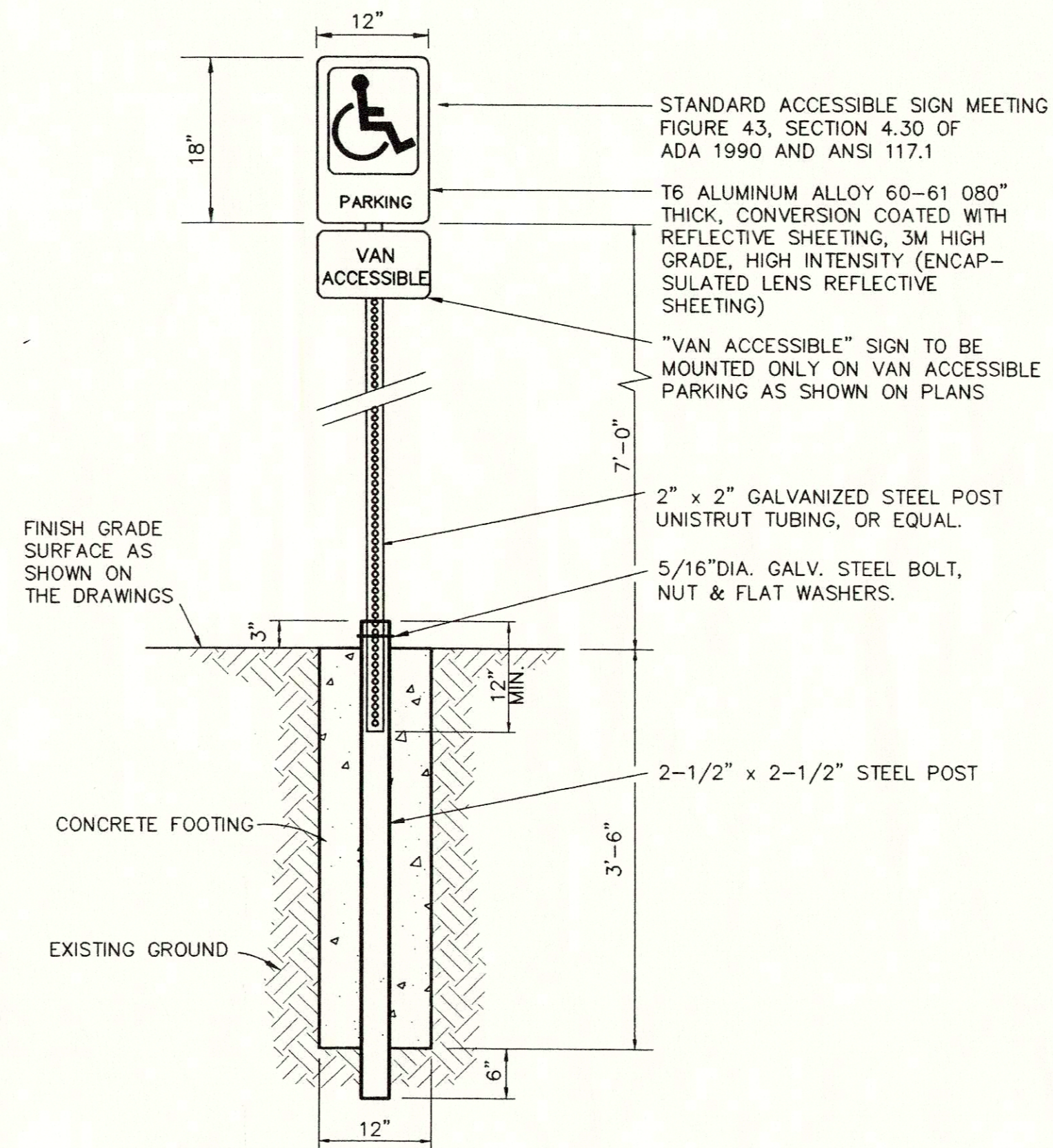
**1 SITE SECTION**  
 SCALE: HORIZ. 1" = 4'  
 VERT. 1" = 4'



**2 THICKENED EDGE SIDEWALK**  
 NTS

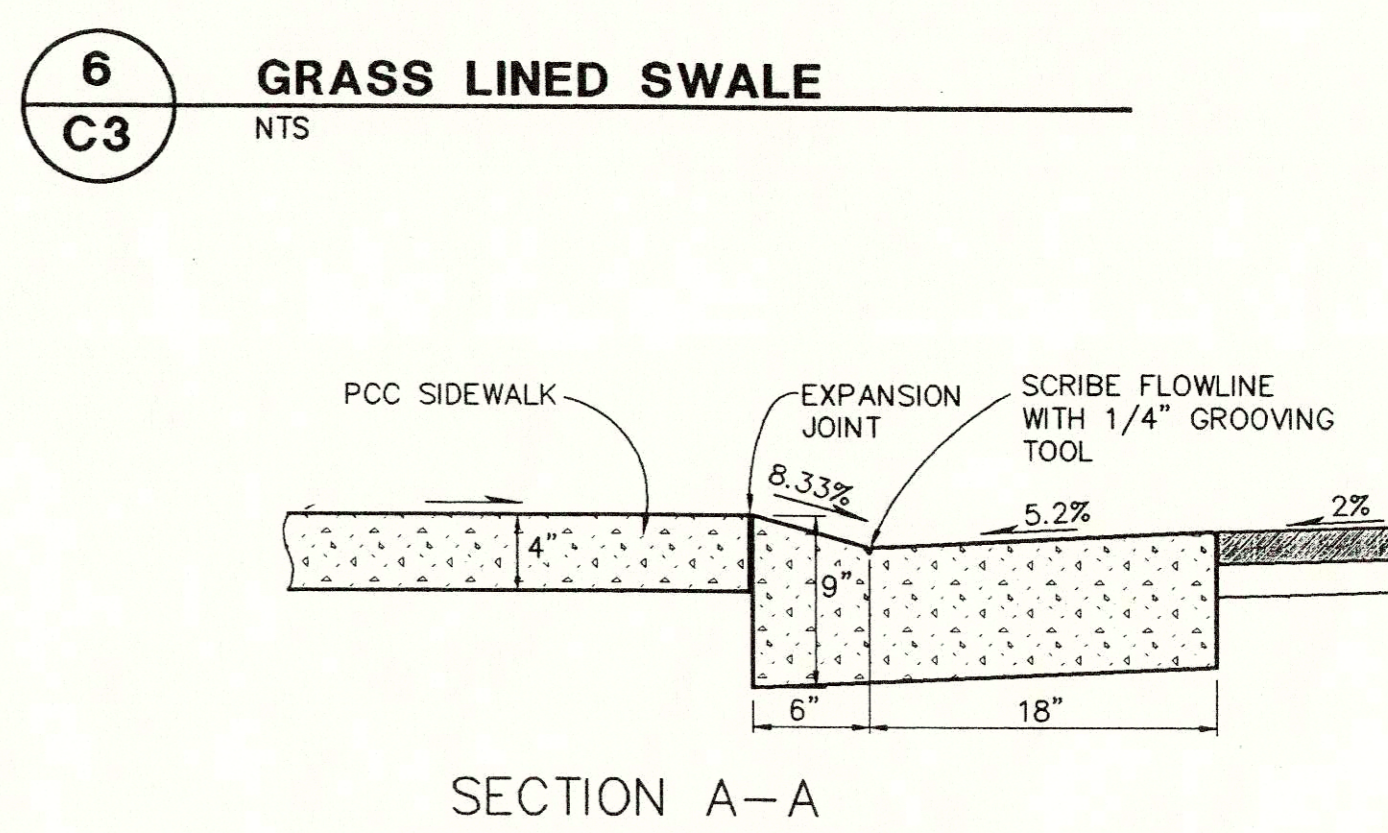


**3 CURB AND GUTTER DETAIL**  
 NTS

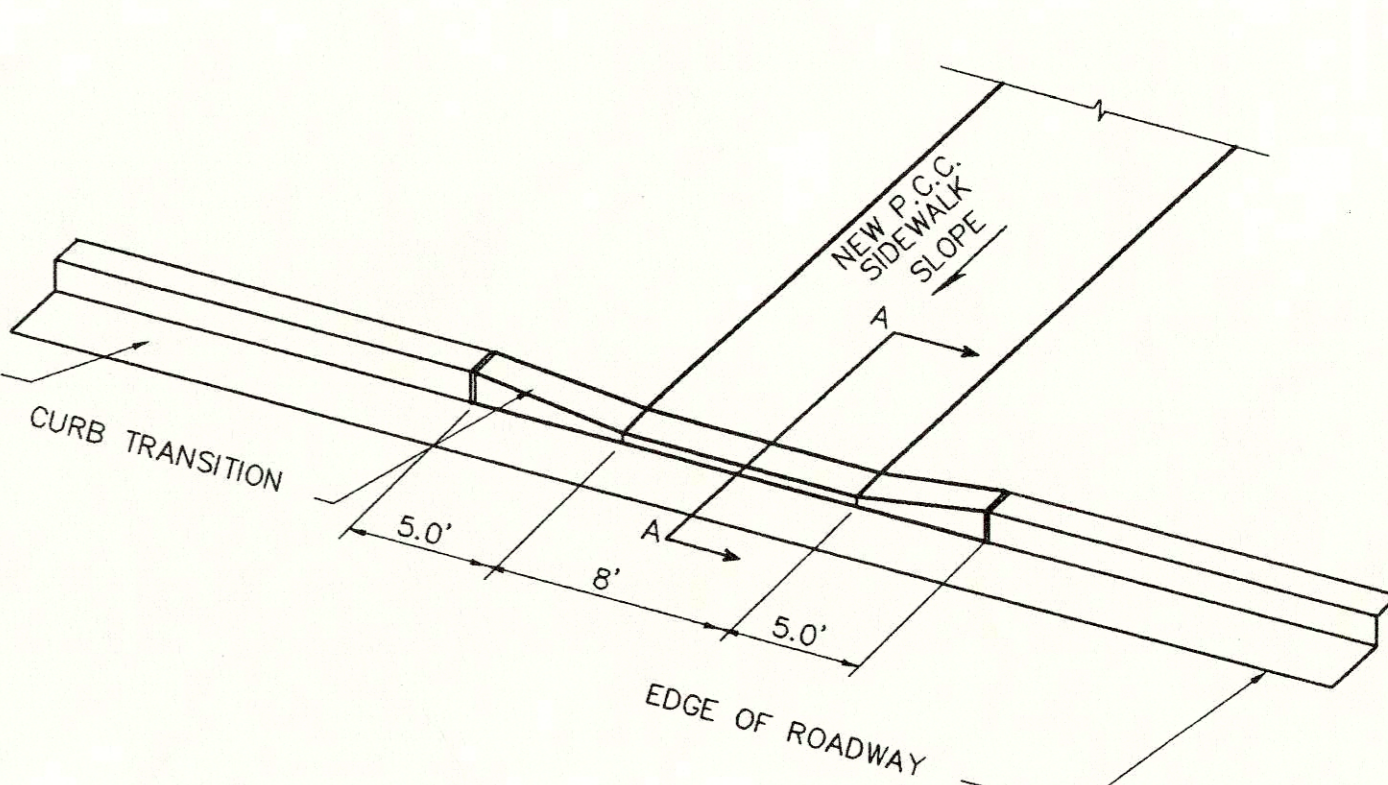


**4 HANDICAP PARKING DETAIL**  
 NTS

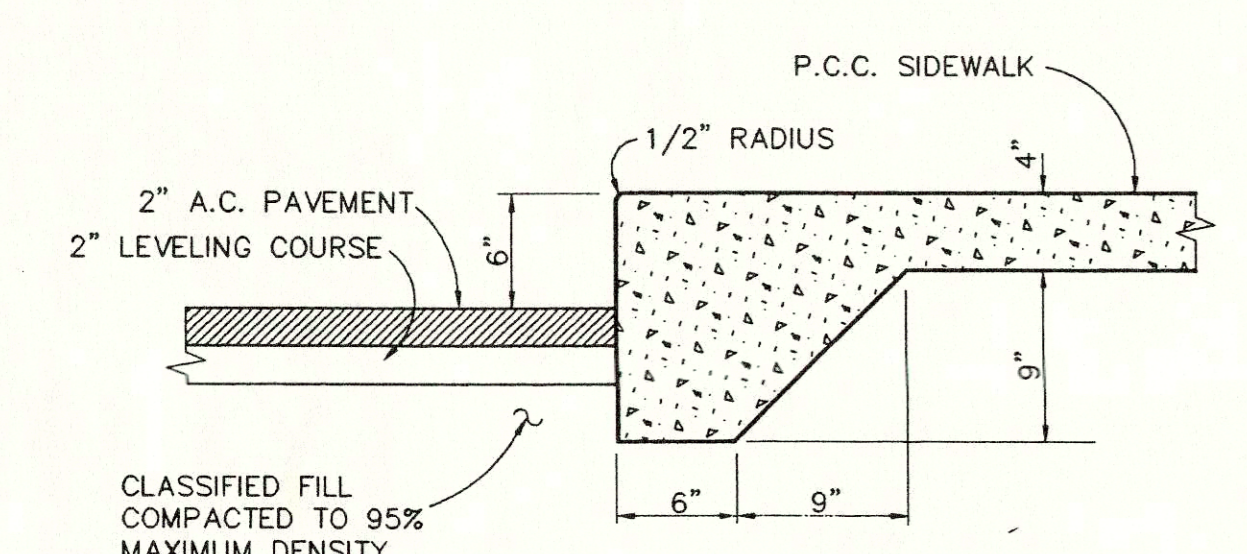
**5 HANDICAP PARKING SIGN**  
 NTS



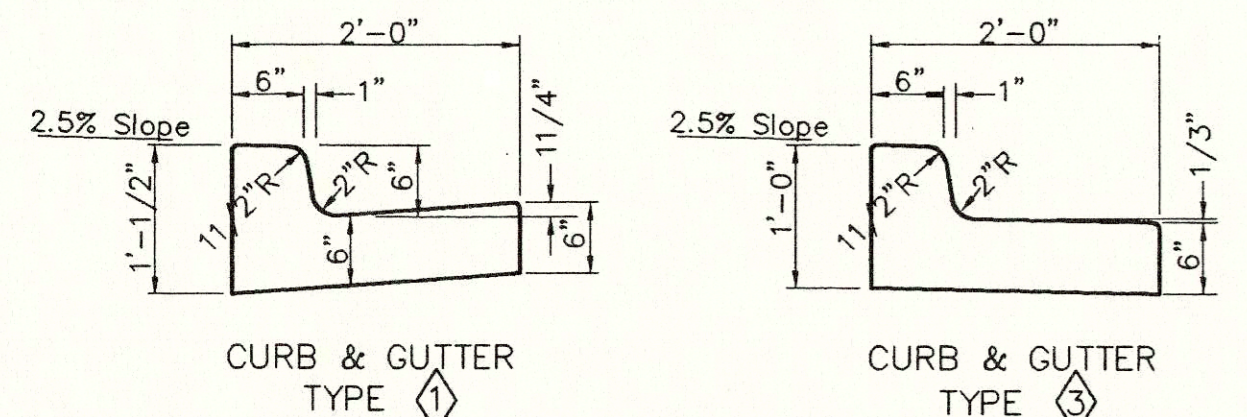
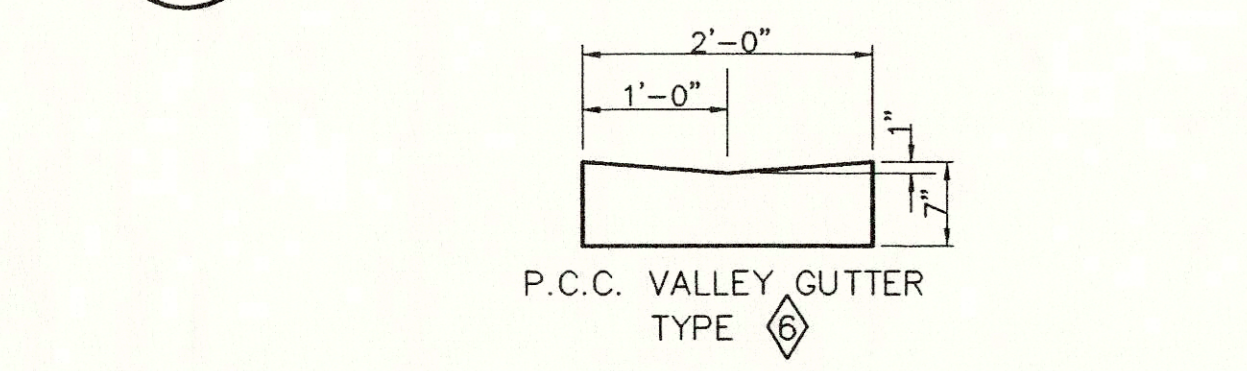
**6 GRASS LINED SWALE**  
 NTS



**7 SIDEWALK CURBCUT DETAIL**  
 NTS



**2 THICKENED EDGE SIDEWALK**  
 NTS



NOTE  
 BOTH FRONT AND BACK EDGES OF THE CURB & GUTTER SHALL BE TROWELED TO A RADIUS OF ONE-HALF (1/2) INCH.

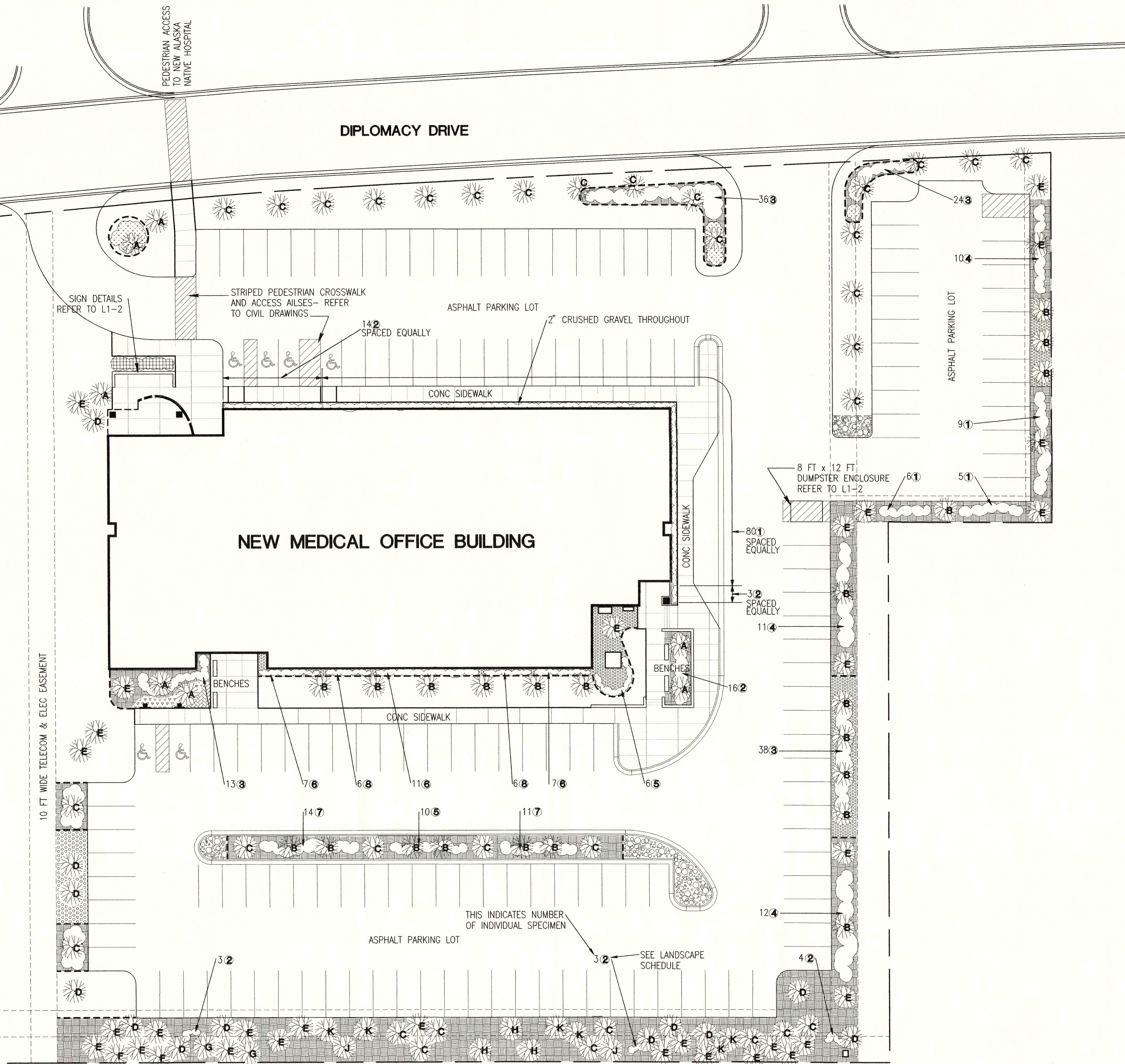
**3 CURB AND GUTTER DETAIL**  
 NTS



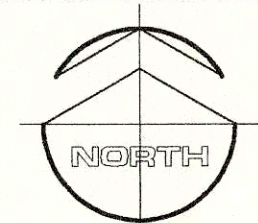
**LANDSCAPE SCHEDULE**

	DESCRIPTION	SIZE	QTY.	REMARKS
TREE LEGEND	RADIANT CRABAPPLE MALUS RADIANT	1 1/2" CAL	7	8'-10' HT.
	CANADA RED CHERRY PRUNUS VIRGINIANA	1 1/4" CAL	19	8'-10' HT.
	AMUR CHOKECHERRY PRUNUS MAACKI	1 1/4" CAL	33	8'-10' HT.
	PAPER BIRCH 'CLUMP' BETULA Papyrifera	1 1/2" CAL	12	10'-12" HT. 3 STEM MIN.
	COLORADO GREEN SPRUCE PICEA Pungens	5'-6'	30	MIN. 5:3 HT. TO SPREAD RATIO
	ROYALTY CRAB MALUS 'ROYALTY'	5'-6'	2	
	MAY DAY PRUNUS PADUS	6'-8'	2	
	HOPA CRABAPPLE MALUS 'HOPA'	5'-6'	3	
	WHITE SPRUCE PICEA GLAUCA	6'-7'	2	
	AMUR MAPLE ACER GINNALA	3'-4'	6	
SHRUB LEGEND	ALPINE CURRANT RIBES ALPINUM	15"	79	
	COTONEASTER COTONEASTER LUCIDUS	3'	27	2.5' O.C.
	GOLDFLAME SPIREA SPIREA BIMALDA 'GOLDFLAME'	15"	126	△ SPACE PER PLAN
	SIBERIAN PEA SHRUB CARAGANA ARBORESCENS	3'-4'	53	4' O.C. ROW PLANTING
	MUGHO PINE PINUS MUGHO MUGHUS	15"	34	CONTAINERIZED
	MISS KIM LILAC SYRINGA PATULA 'MISS KIM'	24"	25	2.5' O.C. ROW PLANTING
	ROSE TREE OF CHINA PRUNUS TRILOBA	24"-36"	25	△ SPACING
	THERESE BUGNET ROSE ROSA 'THERESE BUGNET'	24"	12	#2 CONTAINER
GROUND COVER LEGEND	AEGOPIDIUM AEGOPIDIUM PODAGRARIA VARIEGATUM	2 1/4"	110	12" O.C. △SPACE
	RIBBON GRASS PHALARIS ARUNDINACEA PICTA	QT.	26	18" O.C. △SPACE
	BERGINIA HEARTLEAF BERGINIA CARDIFOLIA	QT.	15	18" O.C. △SPACE
	NATURAL ROUND ROCK	12"-18"	PLAN	OVER FILTER FABRIC FILL AREA
	BLACK VINYL EDGING	5"		
	LAWNSEED OVER 4" TOPSOIL			SEE NOTES FOR MIX
	3" WOODCHIP MULCH	"FINES"		3" DEPTH PER PLAN
2" CRUSHED GRAVEL MULCH	3/8" FCHIP	QTY.	REMARKS	
FLOWER BED / PLANTING BY OWNER			PROVIDE 8" TOPSOIL IN BED	

- NOTES:
- LANDSCAPING CONTRACTOR IS TO OBTAIN A FORMAL PLANTING LAYOUT FROM THE ARCHITECT GRAPHICALLY SHOWING THE EXACT LOCATION OF EACH SHRUB, LISTED IN THE SHRUB LEGEND, PRIOR TO PLANTING.
  - SEED LAWN AREAS W/ SEED MIX COMPOSED OF 25% PARK KENTUCKY BLUEGRASS, 25% MERION KENTUCKY BLUEGRASS, 25% NUGGET KENTUCKY BLUEGRASS AND 25% BOREAL RED FESCUE AT 5 LBS/1000 SQ.FT.



**1 LANDSCAPE PLAN**  
1" = 20'



TUDOR ROAD

**NEESER CONSTRUCTION INC.**

**ANCHORAGE NATIVE MEDICAL OFFICE BUILDING**

**ANCHORAGE ALASKA**

REVISIONS  
8/2/96

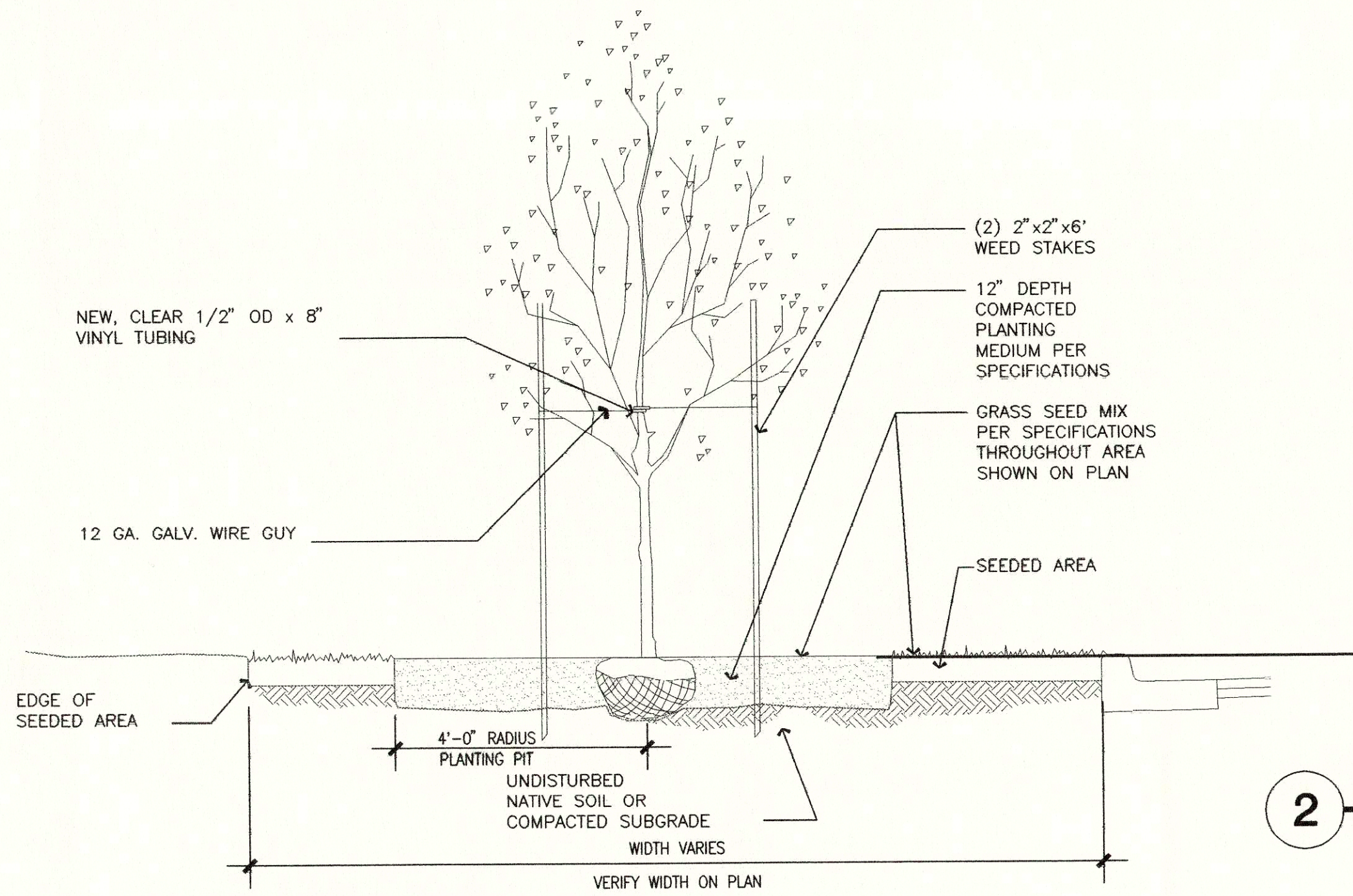
JOB NO. 95069  
DATE 4/30/96  
DRAWN TIMR  
REVIEWED GLW

LANDSCAPE PLAN  
SHEET NO. L1-1 OF 2

ARCHITECTURE PLANNING AND INTERIOR DESIGN  
745 4th AVENUE SUITE 400 ANCHORAGE, ALASKA 99501  
(907) 574-7448 FAX (907) 574-7447 INCORPORATED

2501 Blueberry, Anchorage, Alaska 99503  
Office (907) 276 1058 FAX (907) 276 8533



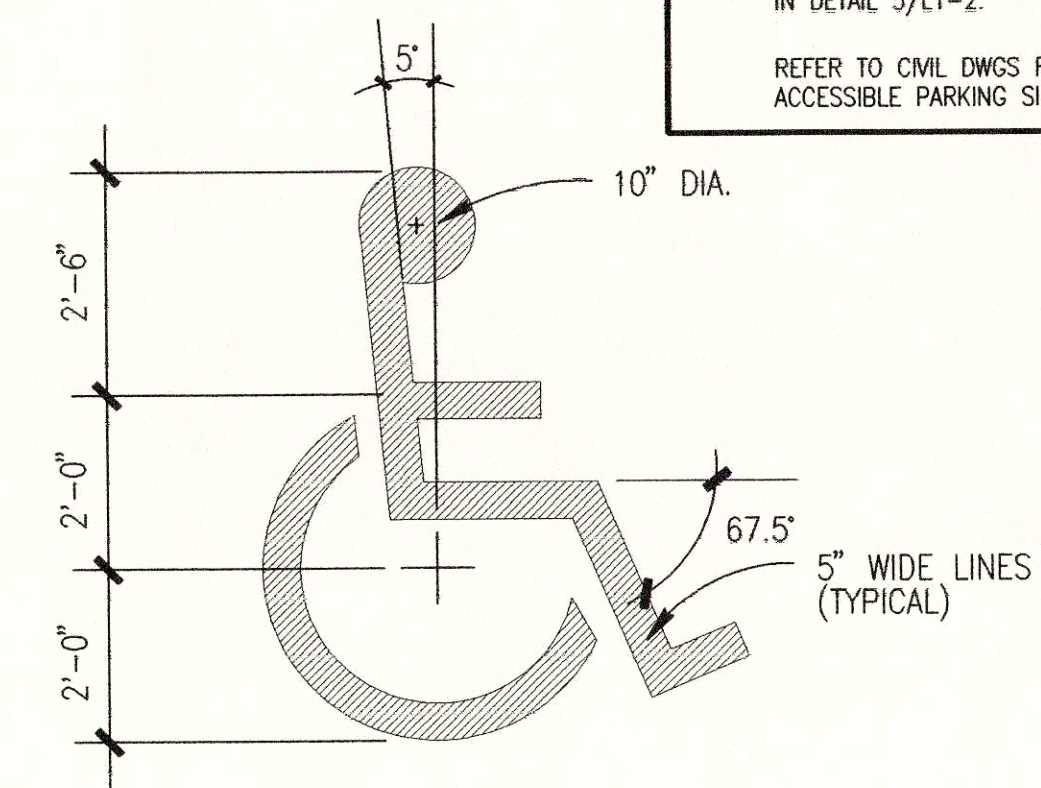


**1 DECIDUOUS TREE DETAIL**

SCALE: NO SCALE

**2 SHRUB PLANTING DETAIL**

SCALE: NO SCALE FOR SEEDED AREAS (VERIFY SPACING ON PLAN)



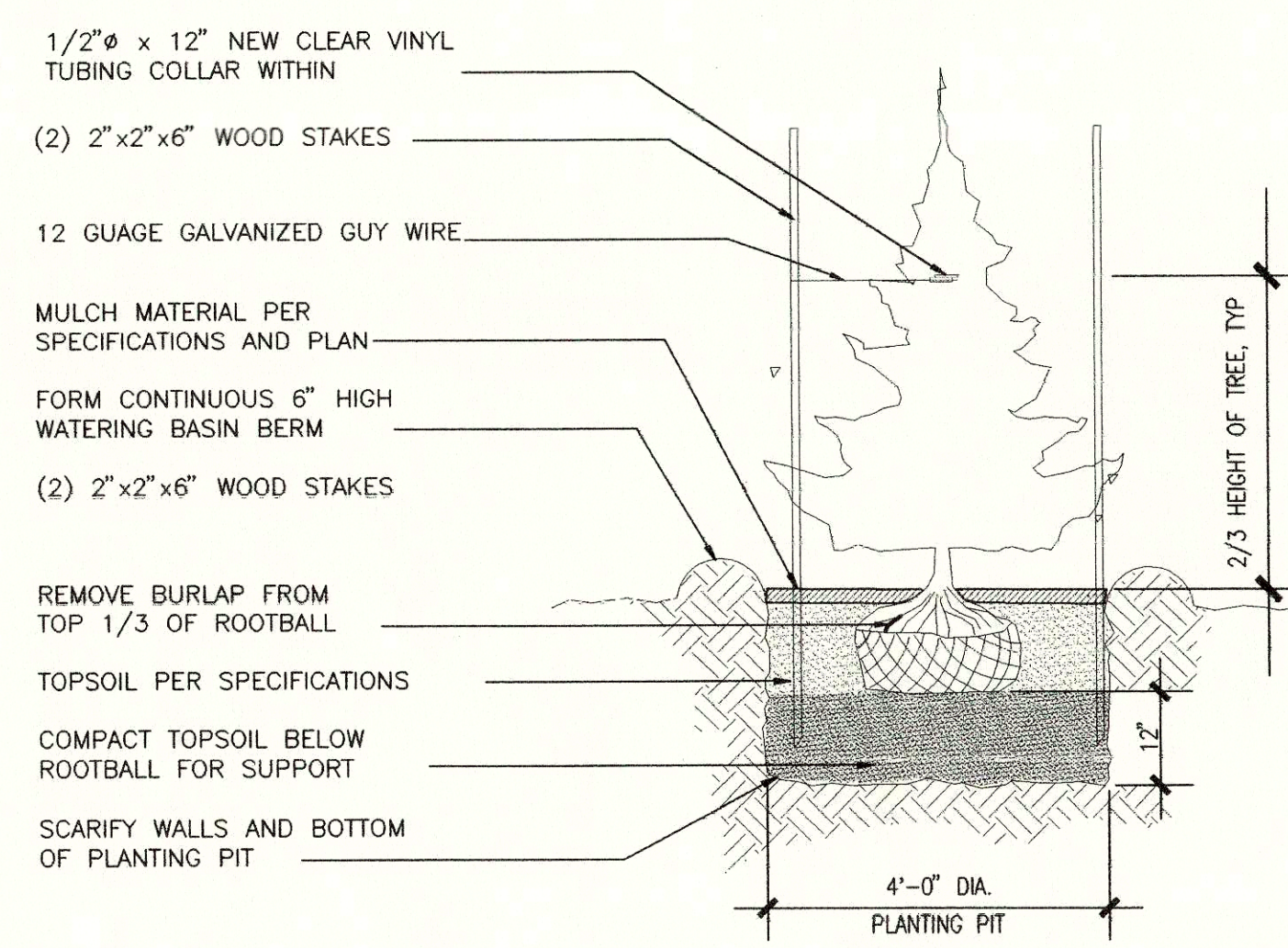
SEE ADAAG SECTION 4.30 (SIGNAGE) FOR ADDITIONAL PROVISIONS.

**6 ACCESSIBLE PARKING SYMBOL**

SCALE: 1\"/>

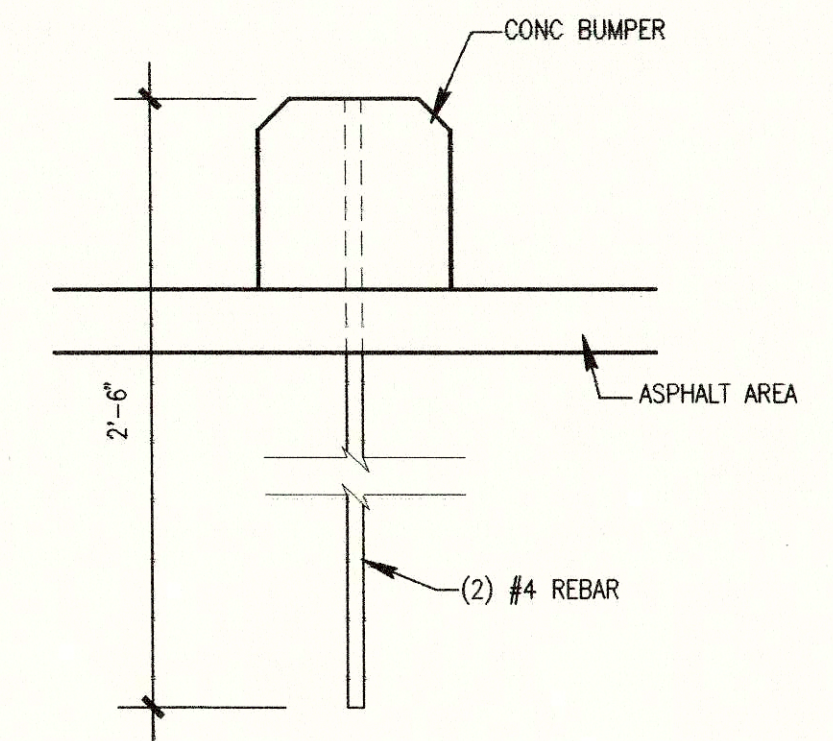
**3 CONIFEROUS TREE DETAIL**

SCALE: NO SCALE



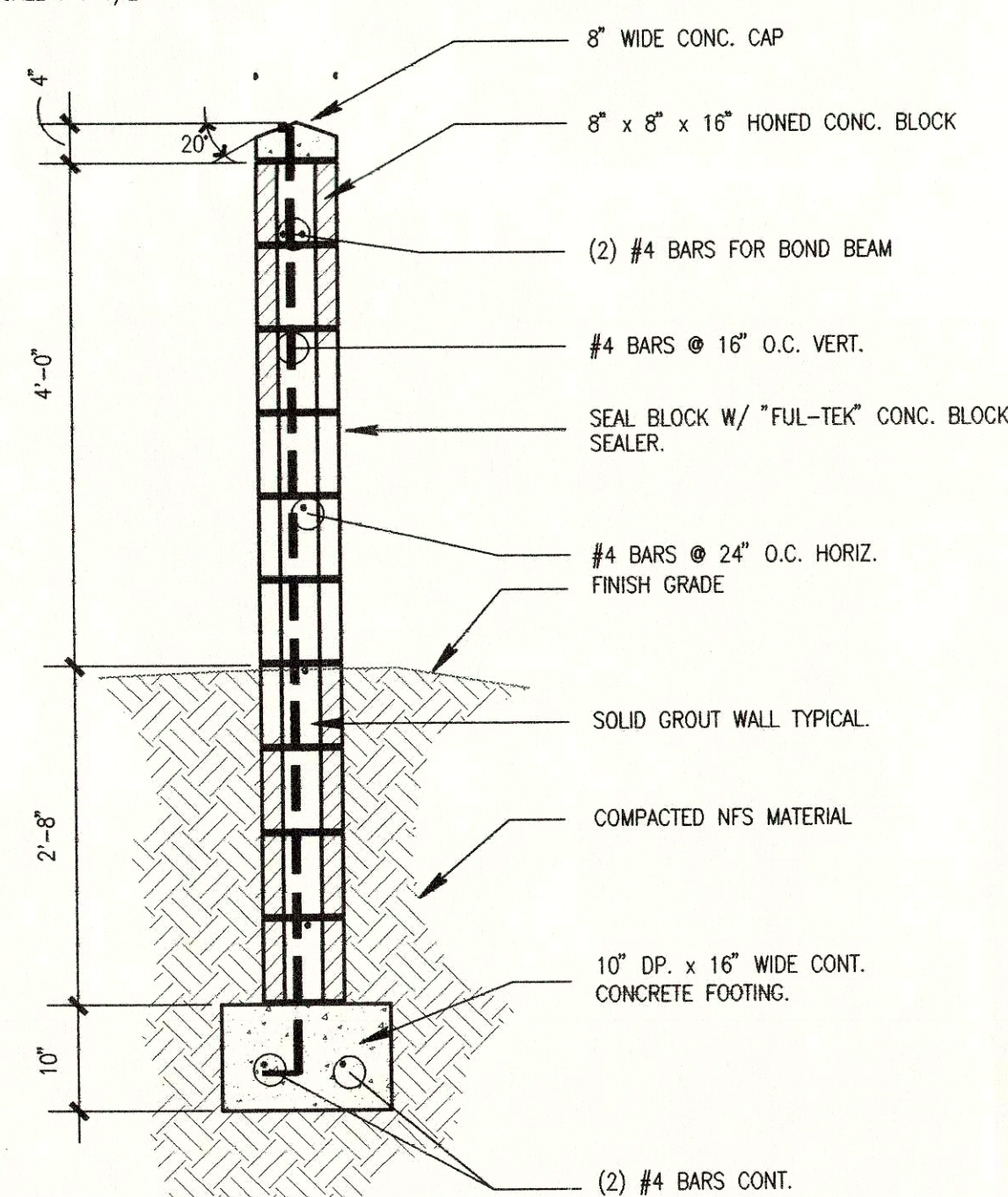
**4 CONCRETE BUMPER DETAIL**

SCALE: NO SCALE



**5 ACCESSIBLE PARKING SIGNAGE**

SCALE: 1 1/2\"/>

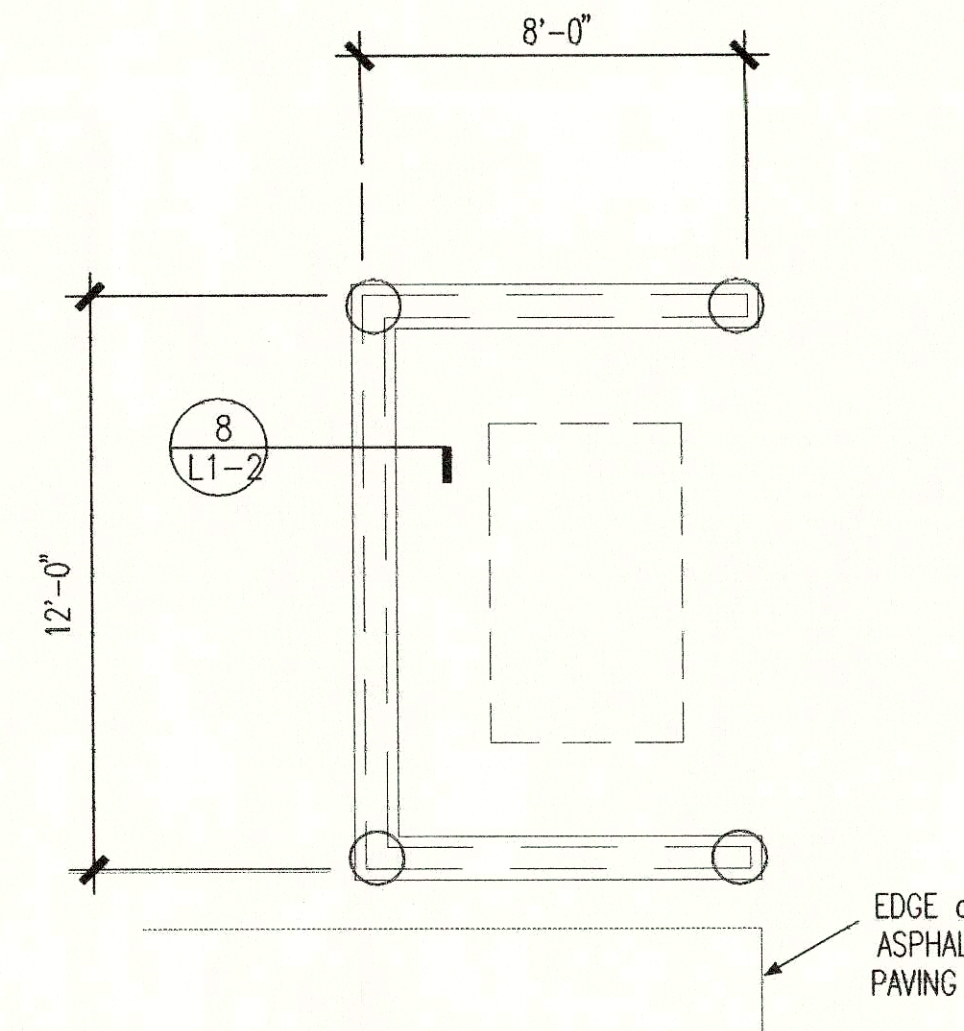


**9 SECTION AT WALL**

SCALE: 3/4\"/>

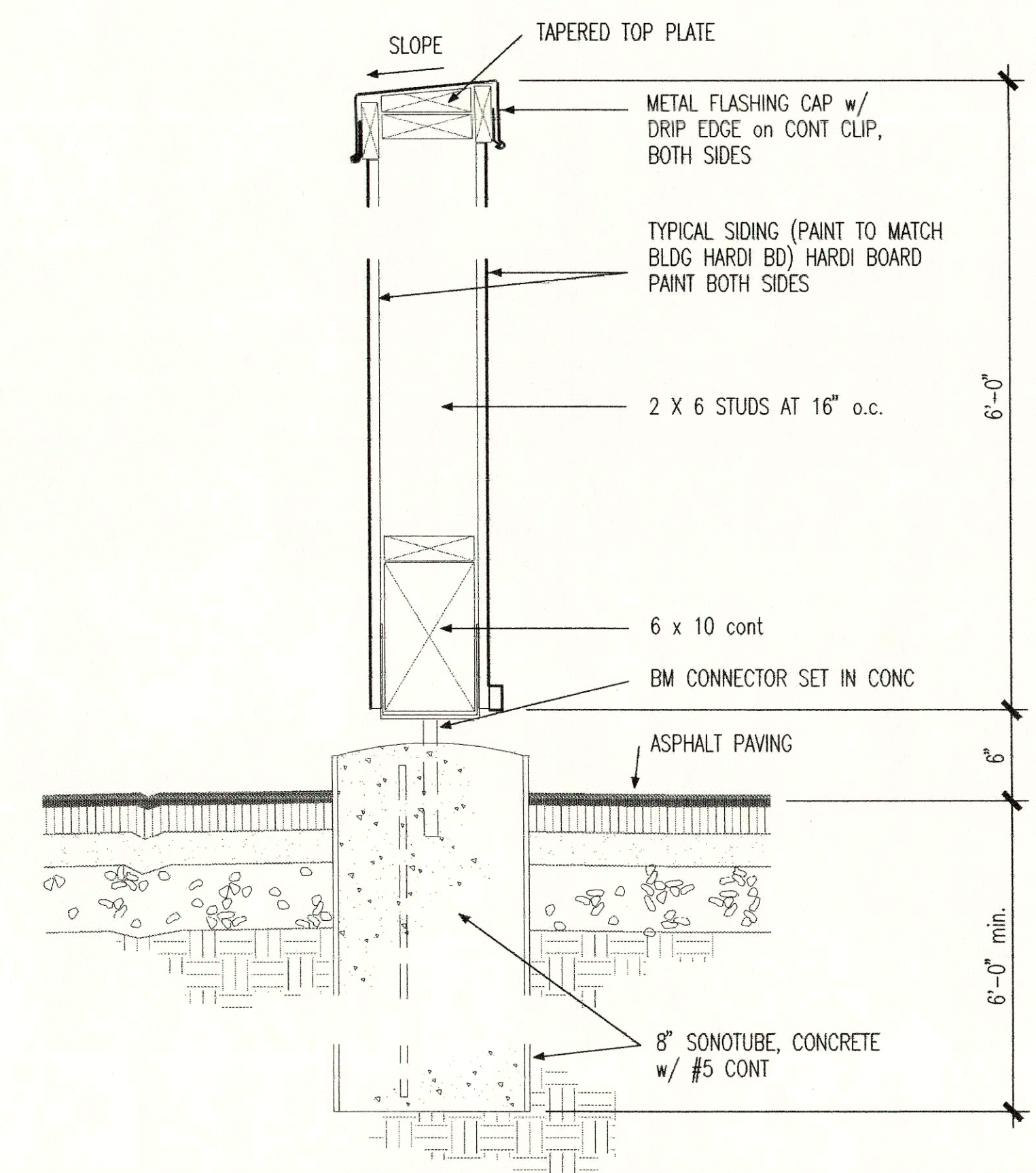
**7 DUMPSTER SCREEN PLAN**

SCALE: 1\"/>



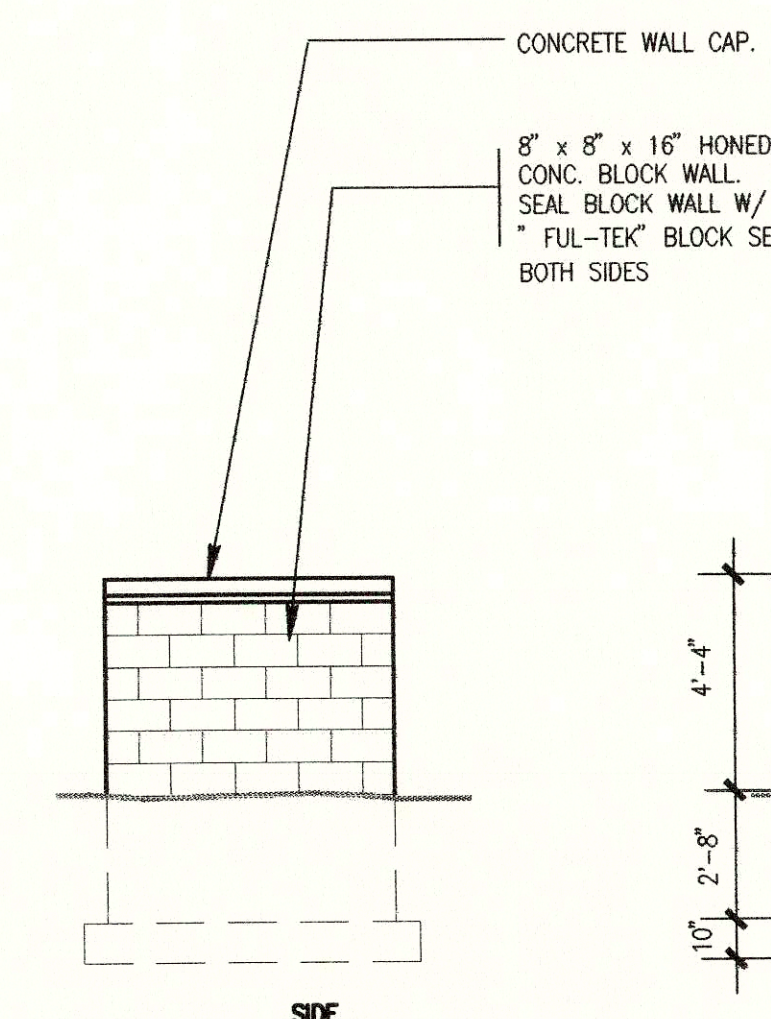
**8 DUMPSTER SCREEN DETAIL**

SCALE: 1\"/>



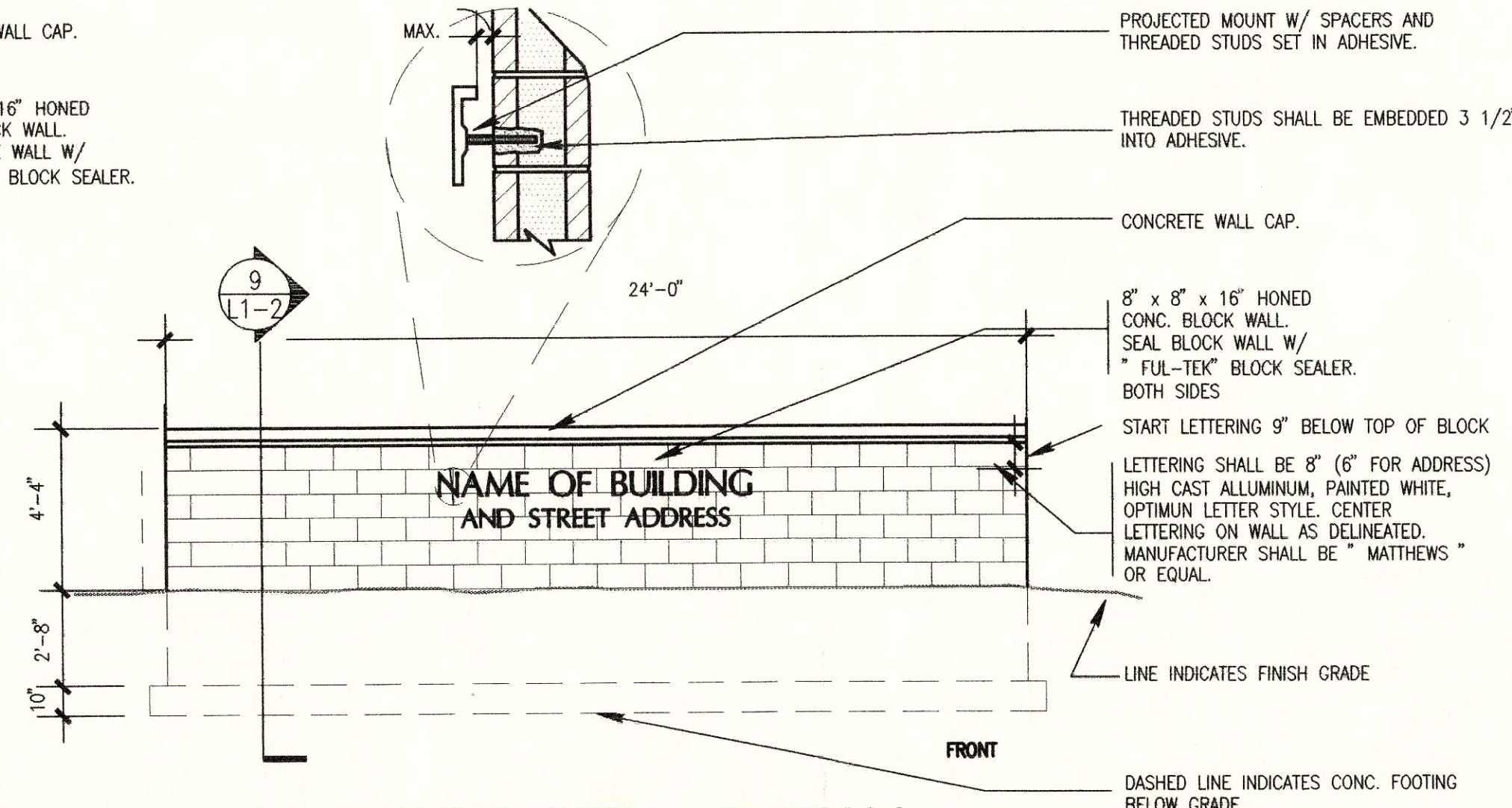
**10 ELEVATION AT WALL**

SCALE: 1/4\"/>



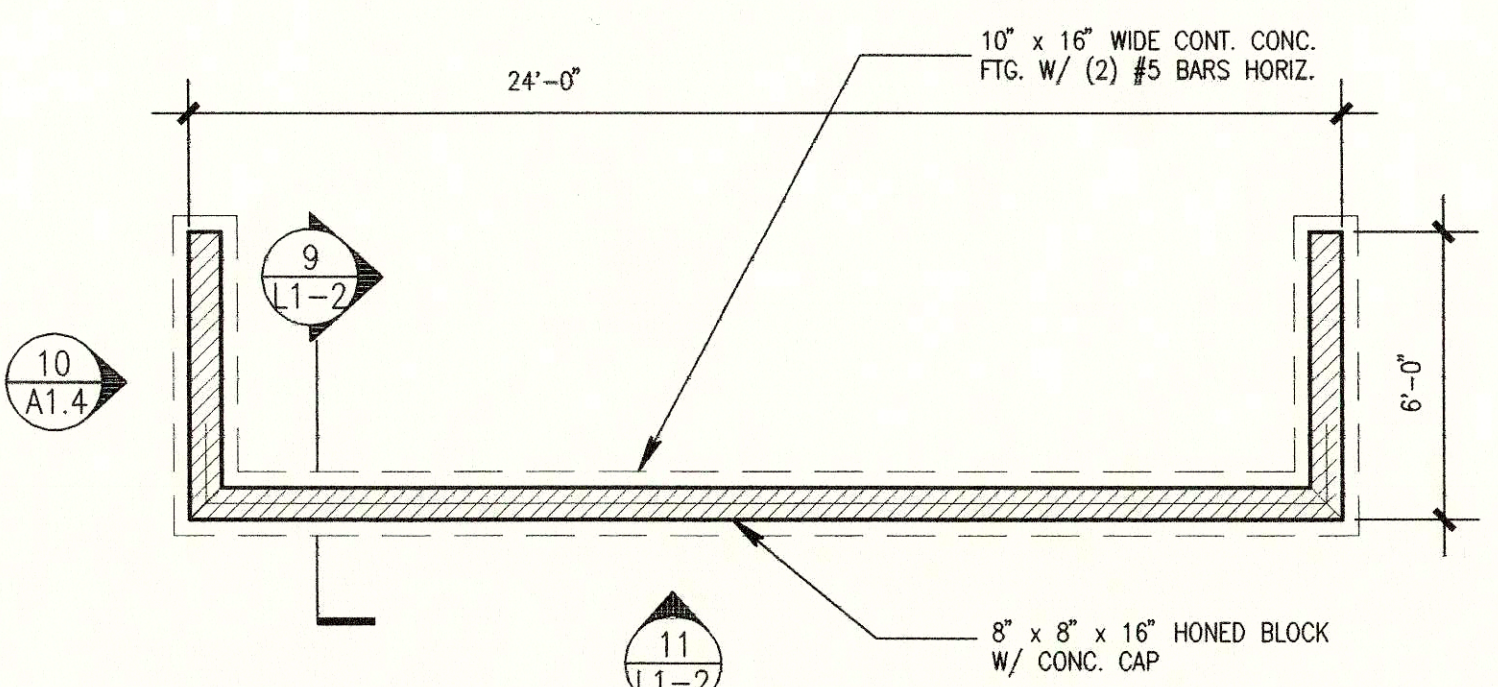
**11 ELEVATION AT WALL**

SCALE: 1/4\"/>



**12 PLAN VIEW of SIGN**

SCALE: 1/4\"/>



ARCHITECTURE PLANNING AND INTERIOR DESIGN  
7400A AVENUE SUITE 400 ANCHORAGE, ALASKA, 99501  
(907) 274-7143 FAX (907) 274-7407 INCORPORATED

NEESER CONSTRUCTION INC.  
2501 Blueberry, Anchorage, Alaska, 99503  
Office (907) 276 1058 FAX (907) 276 8533

Anchorage Native Medical Office Building  
ANCHORAGE ALASKA

REVISIONS  
8/2/96  
JOB NO. 95069  
DATE 4/30/96  
DRAWN JCB  
REVIEWED GLW  
LANDSCAPE DETAILS  
SHEET NO. L1-2 OF 2





KONIG ARCHITECTURE PLANNING AND INTERIOR DESIGN  
 745 MI AVENUE SUITE 400 ANCHORAGE, ALASKA 99501  
 (907) 574-7445 FAX (907) 574-7409 INCORPORATED

NEESER CONSTRUCTION INC.  
 2501 Blueberry, Anchorage, Alaska 99503  
 Office (907) 276 1058 FAX (907) 276 8533

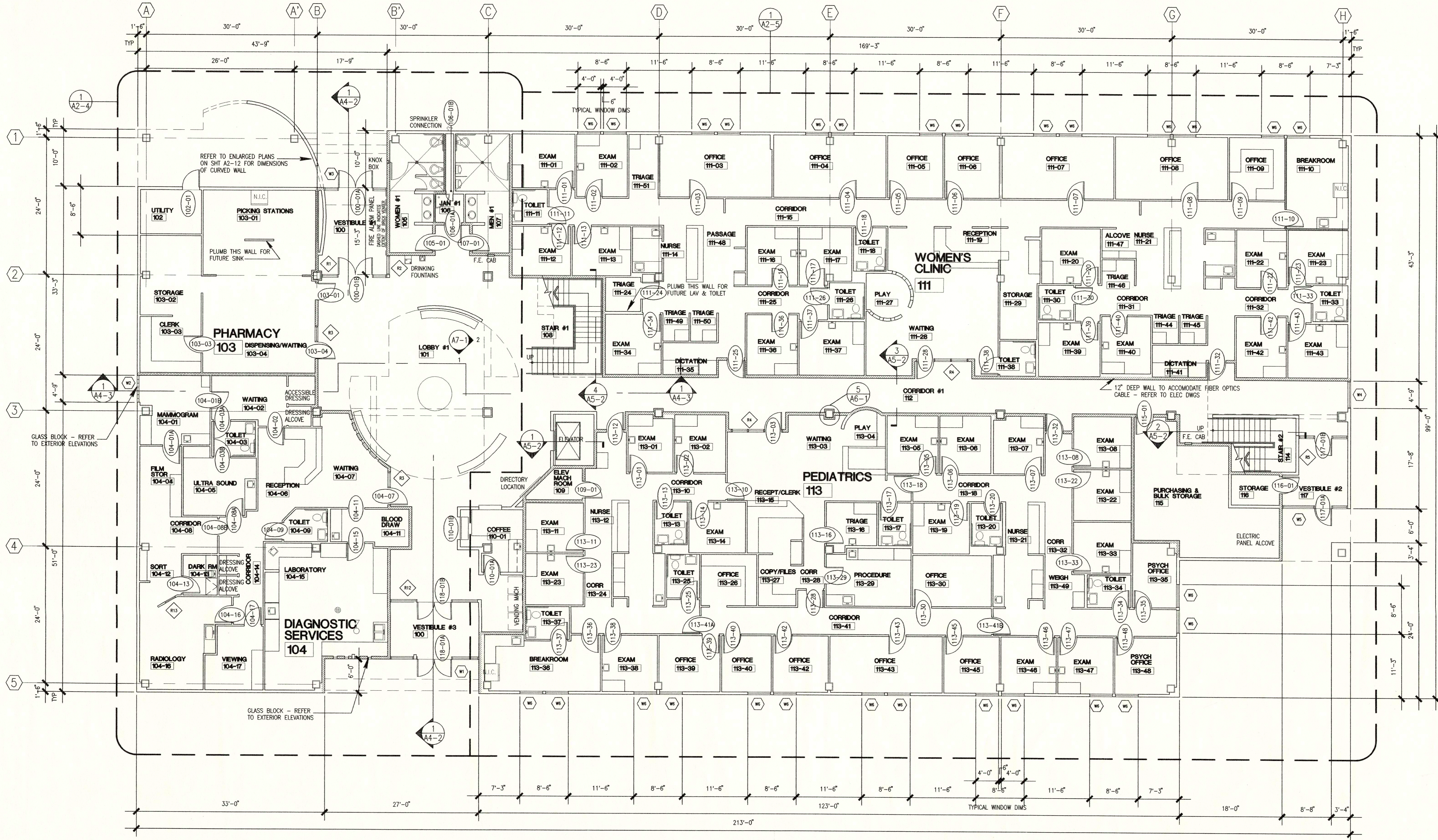
**Anchorage Native Medical Office Building**  
 ANCHORAGE ALASKA

REVISIONS  
 8/2/96

JOB NO. 95069  
 DATE 4/30/96  
 DRAWN RHM  
 REVIEWED GLW

FIRST FLOOR PLAN

SHEET NO. A2-1 OF 13



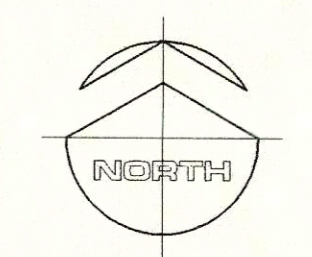
**FIRST LEVEL FLOOR PLAN**

SCALE: 1/8" = 1'-0"

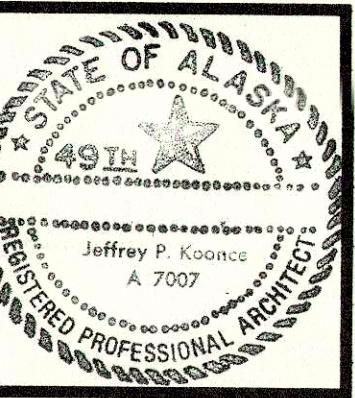
**WALL LEGEND**

————— HATCHED WALLS INDICATE FULL HEIGHT ONE HOUR CONSTRUCTION OUT OF 6" OR 3 5/8" METAL STUDS WITH 5/8" TYPE X GYPSUM WALLBOARD EACH SIDE (GYPSUM ASSOCIATION File No. WP 1200)

————— WALLS SHOWN WITH BATT INSULATION INDICATE FULL HEIGHT NON RATED SOUND AND SECURITY WALLS OUT OF 6" OR 3 5/8" METAL STUDS WITH 5/8" GYPSUM WALLBOARD ON EACH SIDE AND FULL THICK BATT INSULATION







KOONCE  
ARCHITECTURE PLANNING AND INTERIOR DESIGN  
745.46 AVENUE SUITE 400 ANCHORAGE, ALASKA 99501  
(907) 274-7443 FAX (907) 274-7447 INCORPORATED

NEESER CONSTRUCTION INC.  
2501 Blueberry, Anchorage, Alaska 99503  
Office (907) 276 1058 FAX (907) 276 8533

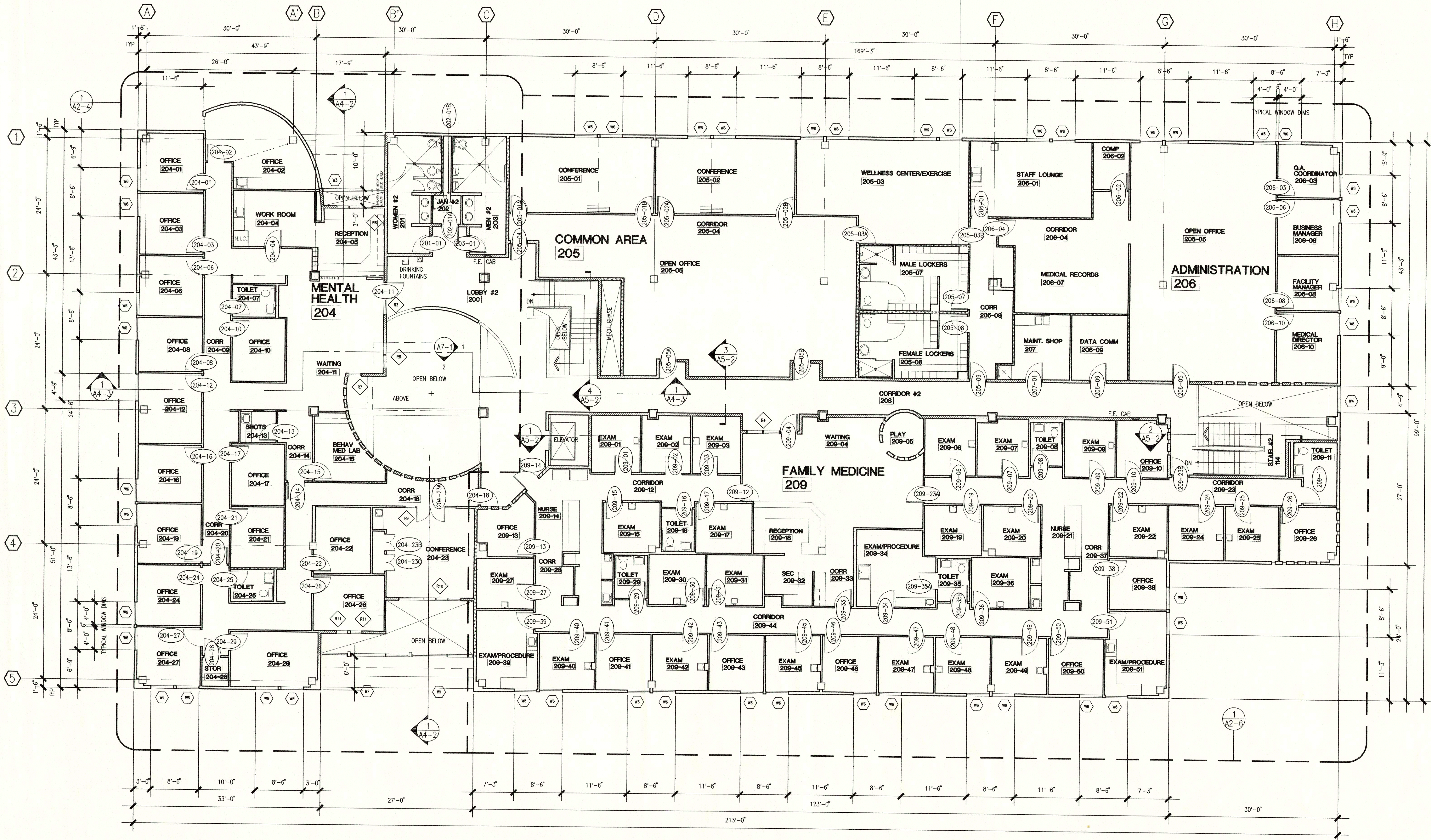
Anchorage Native Medical  
Office Building  
ANCHORAGE ALASKA

REVISIONS  
8/2/96  
DRAWING PATH: \N\SPRCA\590689\204-2-2

JOB NO. 95069  
DATE 4/30/96  
DRAWN RHM  
REVIEWED GLW

SECOND FLOOR PLAN

SHEET NO. A2-2 OF 13



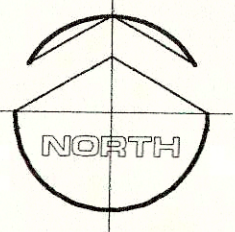
**SECOND LEVEL FLOOR PLAN**

SCALE: 1/8" = 1'-0"

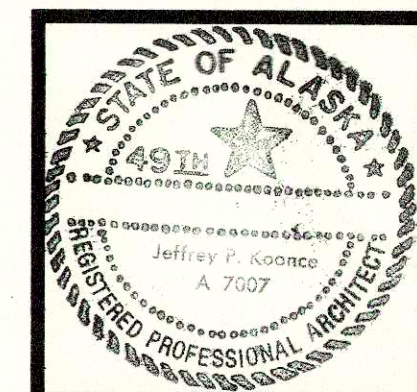
**WALL LEGEND**

HATCHED WALLS INDICATE FULL HEIGHT ONE HOUR CONSTRUCTION OUT OF 6" OR 3 5/8" METAL STUDS WITH 5/8" TYPE X GYPSUM WALLBOARD EACH SIDE (GYPSUM ASSOCIATION File No. WP 1200)

WALLS SHOWN WITH BATT INSULATION INDICATE FULL HEIGHT NON RATED SOUND AND SECURITY WALLS OUT OF 6" OR 3 5/8" METAL STUDS WITH 5/8" GYPSUM WALLBOARD ON EACH SIDE AND FULL THICK BATT INSULATION







ARCHITECTURE PLANNING AND INTERIOR DESIGN  
 K O O S  
 ARCHITECTURE PLANNING AND INTERIOR DESIGN  
 7454B AVENUE SUITE 400 ANCHORAGE, ALASKA 99501  
 (907) 274-7443 FAX (907) 274-7407 INCORPORATED

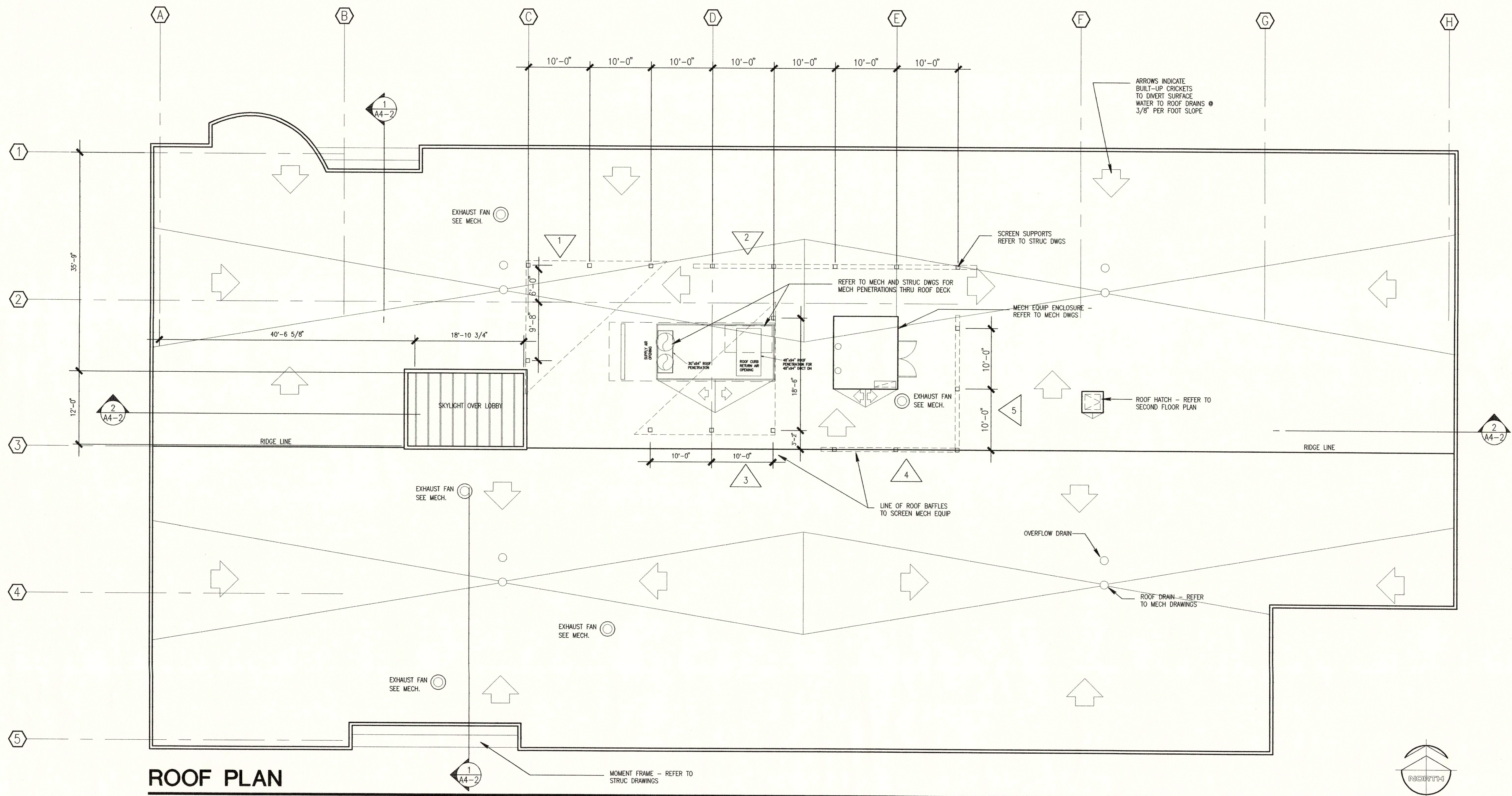
NEESER CONSTRUCTION INC.  
 2501 Blueberry, Anchorage, Alaska 99503  
 Office (907) 276 1058 FAX (907) 276 8633

**Anchorage Native Medical Office Building**  
 ANCHORAGE ALASKA

REVISIONS  
 8/2/96  
 95069  
 DATE 4/30/96  
 DRAWN RHM  
 REVIEWED GLW

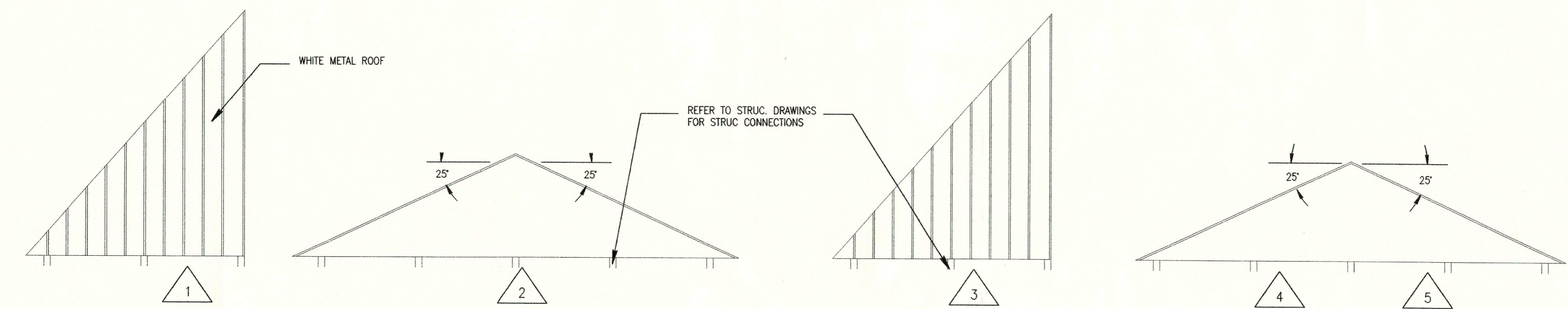
ROOF PLAN

SHEET NO.  
**A2-3**  
 OF 13



**ROOF PLAN**

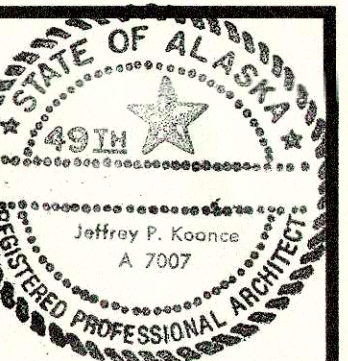
SCALE: 1/8" = 1'-0"



**TRUE ELEVATIONS OF ROOF BAFFLES**

SCALE: 1/8" = 1'-0"





**KOONCE PETERSON**  
ARCHITECTURE PLANNING AND INTERIOR DESIGN  
745 4th AVENUE SUITE 400 ANCHORAGE, ALASKA 99501  
(907) 274-7443 FAX (907) 274-7497 INCORPORATED

**NEESER CONSTRUCTION INC.**  
**NDI**  
2501 Blueberry, Anchorage, Alaska 99503  
Office (907) 276 1058 FAX (907) 276 8533

**Anchorage Native Medical  
Office Building**  
**ANCHORAGE ALASKA**

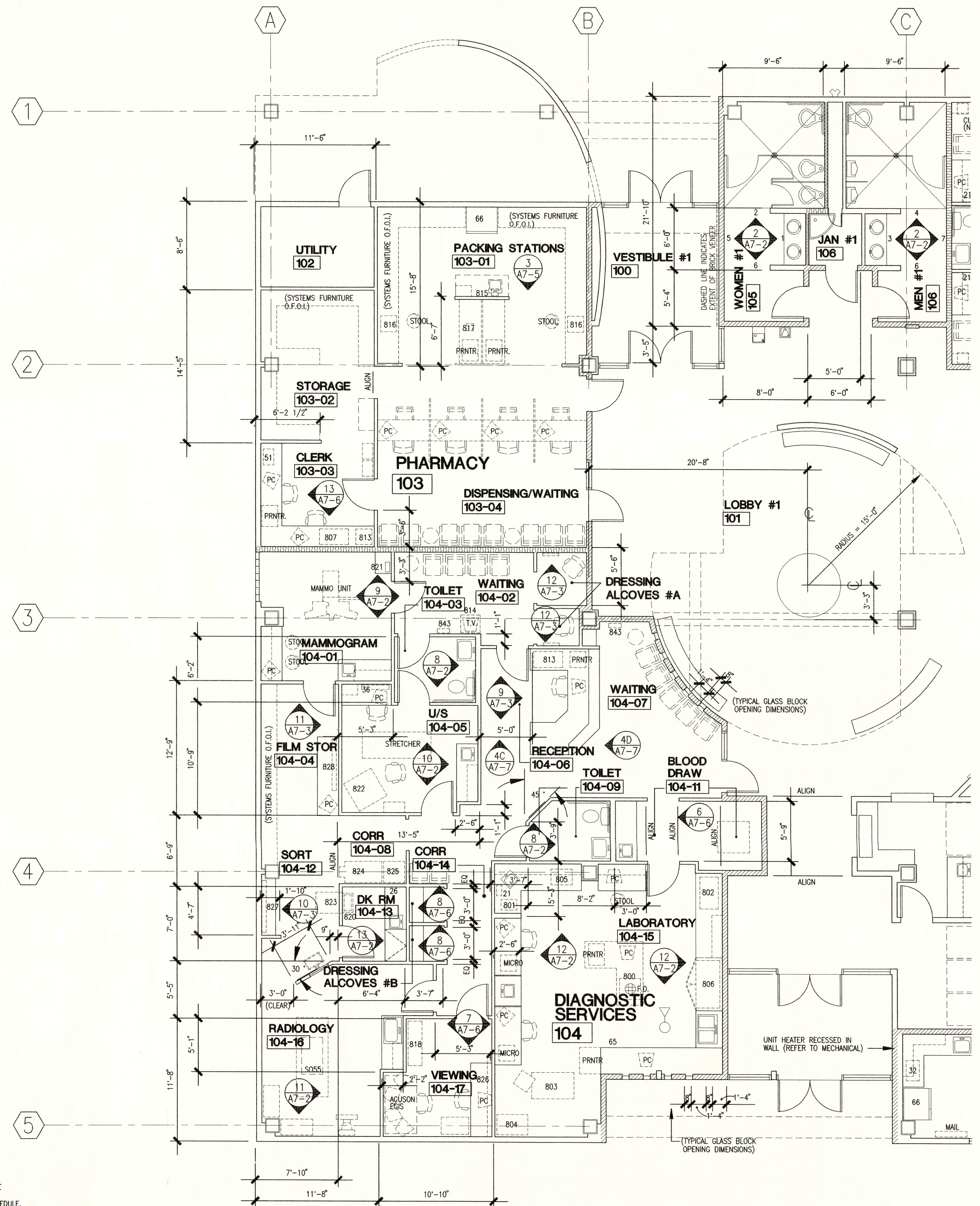
REVISIONS

8/2/96

JOB NO. 95069  
DATE 4/30/96  
DRAWN TR  
REVIEWED GLW

**FIRST FLOOR  
WEST SIDE T. I.  
PLANS**

SHEET NO.  
**A2-4**  
OF 13



**WALL LEGEND**

WALLS SHOWN WITH BATT INSULATION INDICATE FULL HEIGHT NON RATED SOUND AND SECURITY WALLS OUT OF 6" OR 3-5/8" METAL STUDS WITH 5/8" GYPSUM WALLBOARD ON EACH SIDE AND FULL THICK BATT INSULATION

HATCHED WALLS INDICATE FULL HEIGHT ONE HOUR CONSTRUCTION OUT OF 6" OR 3-5/8" METAL STUDS WITH 5/8" GYPSUM WALLBOARD ON EACH SIDE (GYPSUM ASSOCIATION File No. WP 1200)

**SHEET NOTES**

FURNITURE, EQUIPMENT, COMPUTERS, TELEVISION MONITORS, SHELVING, ETC. SHOWN WITH DASHED LINES SHALL BE OWNER FURNISHED AND OWNER INSTALLED (O.F.O.I.). THESE ITEMS ARE INDICATED ON THE PLANS TO ASSIST IN ADDRESSING POWER LOCATIONS FOR EQUIPMENT. REFER TO META EQUIPMENT SCHEDULE.

**FIRST FLOOR WEST SIDE TENANT IMPROVEMENT PLANS**

SCALE: 3/16" = 1'-0"

