

**SECOND FLOOR PLAN**  
 SCALE = 1/8" = 1'-0"

**AUDIO-VIDEO, INC.**  
 5430 FARBANKS ST., SUITE #7  
 ANCHORAGE, ALASKA 99518  
 (907) 561-1311 FAX 907-4660

STATE OF ALASKA FIRE ALARM & FIRE SUPPRESSION PERMIT NUMBER 94-003

Underwriters Laboratories Inc.  
 Listed Alarm Service Company

ANCHORAGE, ALASKA  
 LISTED TELECOMMUNICATIONS  
 LISTED TELEVISION

CONTRACTOR/INSTALLER

PROJECT NAME:	
AREA:	
DATE:	
BY:	
CHECKED BY:	
APPROVED BY:	
DRAWING DATE:	
CAD FILENAME:	

**ANC NATIVE MEDICAL OFFICE BLDG.**  
 ANCHORAGE, ALASKA

**2ND FLOOR**

**FIRE ALARM DEVICE LAYOUT**

THIS DRAWING AND THE IDEAS AND DESIGN CONTAINED HEREIN IS THE PROPERTY OF AUDIO-VIDEO, INCORPORATED, AND AS SUCH, MAY NOT BE REPRODUCED IN WHOLE OR IN PART WITHOUT THE EXPRESS WRITTEN CONSENT OF A.V.I.

D.P.S.: 0-8

DRAWN BY: DRG/LMN

CHECKED BY:

APPROVED BY:

SCALE: 1/8" = 1'-0"

DRAWING DATE: 10/08/98

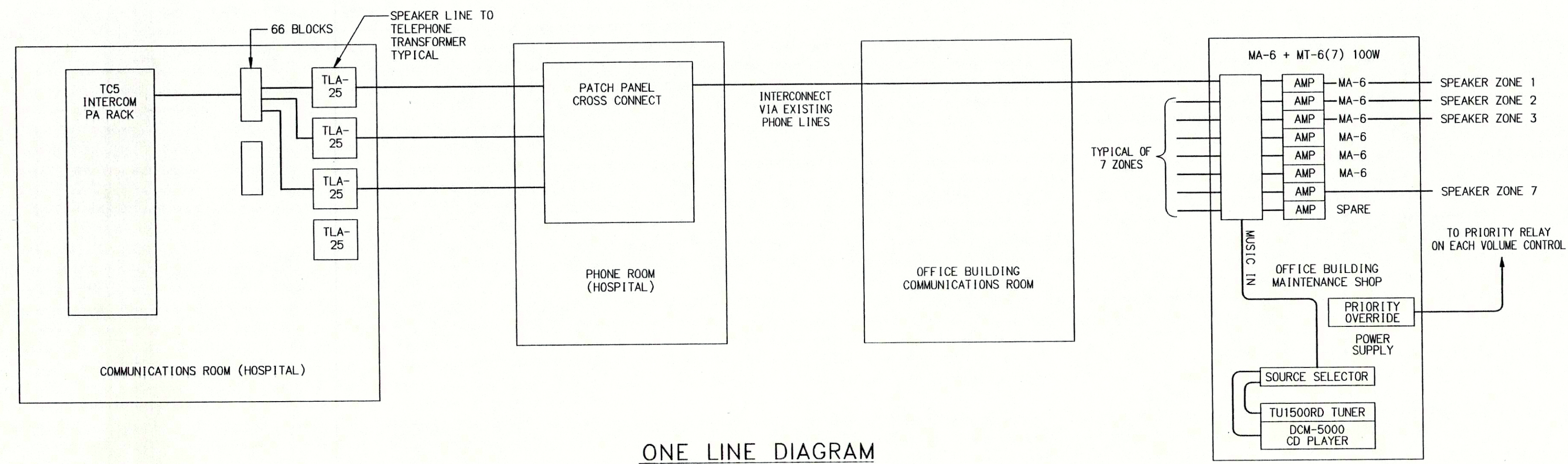
CAD FILENAME: ROGER-2

RECEIVED  
 FEB 19 1999  
 ELECTRIC, INC.

CATEGORY: FA

DRAWING NUMBER: **ROGER-2**

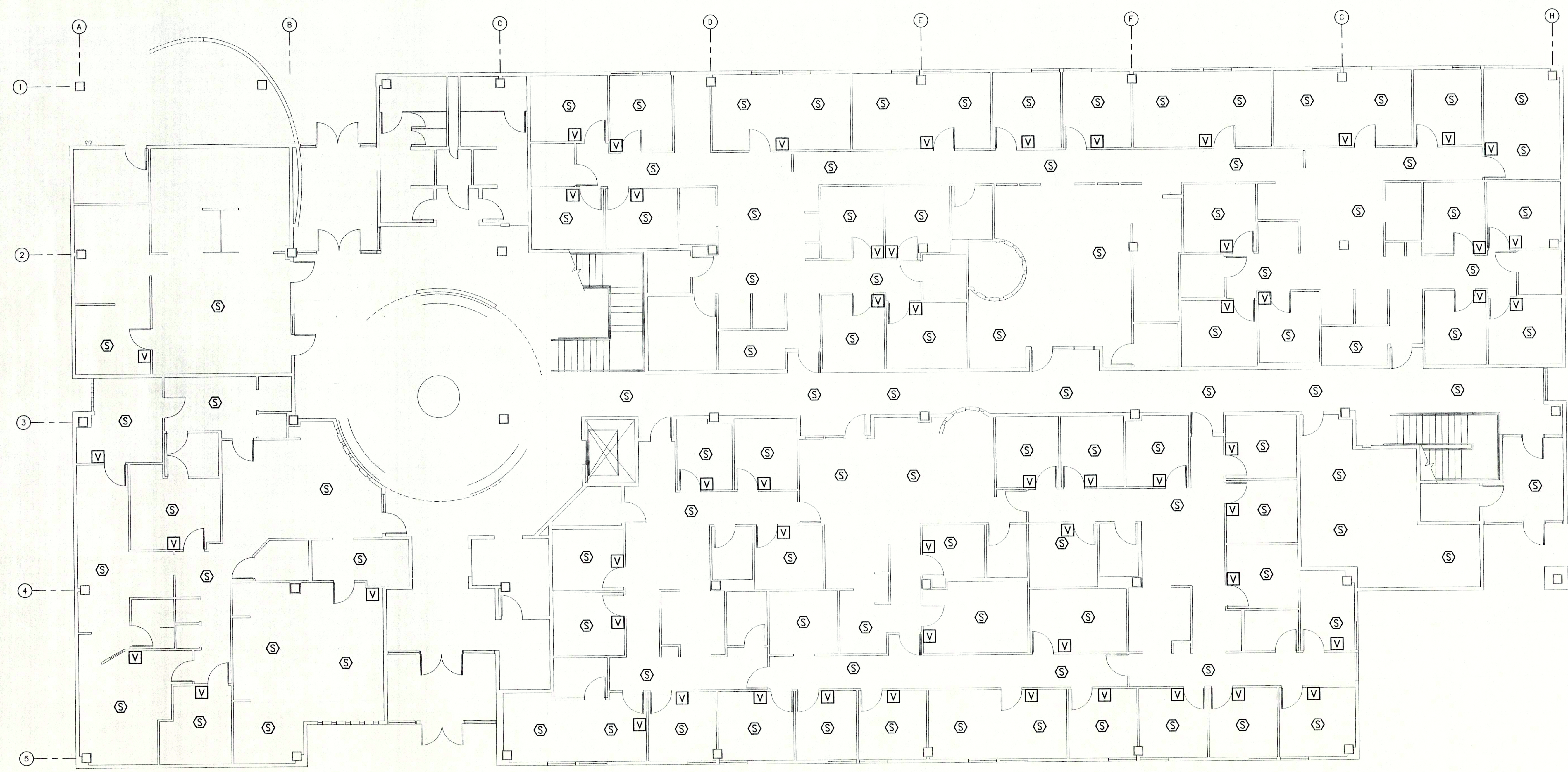




**LEGEND**

SYMBOL	DESCRIPTION
(S)	SPEAKER
(V)	VOLUME CONTROL

ONE LINE DIAGRAM



**FIRST FLOOR PLAN**  
SCALE = 1/8" = 1'-0"

**AUDIO-VIDEO, INC.**  
5430 FAIRBANKS ST., SUITE #7  
ANCHORAGE, ALASKA 99507  
(907) 561-1911 FAX 981-4850

STATE OF ALASKA FIRE ALARM & FIRE SUPPRESSION PERMIT NUMBER 94-003

Underwriters Laboratories (UL) Certified Technicians  
National Institute for Certification in Engineering Technician (NICET) Certificate Number 82923 ULUS

CONTRACTOR/INSTALLER

REVISION DESCRIPTION

ANC NATIVE MEDICAL OFFICE BLDG.  
ANCHORAGE, ALASKA

1ST FLOOR

INTERCOM & SOUND DEVICE LAYOUT & ONE-LINE DIAGRAM

PROJECT NAME: ANC-MED1

DATE: 10/08/98

SYSTEM: INTERCOM & SOUND DEVICE LAYOUT & ONE-LINE DIAGRAM

REVISION DESCRIPTION

D.P.S. 10-8

DRAWN BY: DRG/LMN

CHECKED BY:

APPROVED BY:

SCALE: AS SHOWN

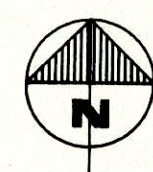
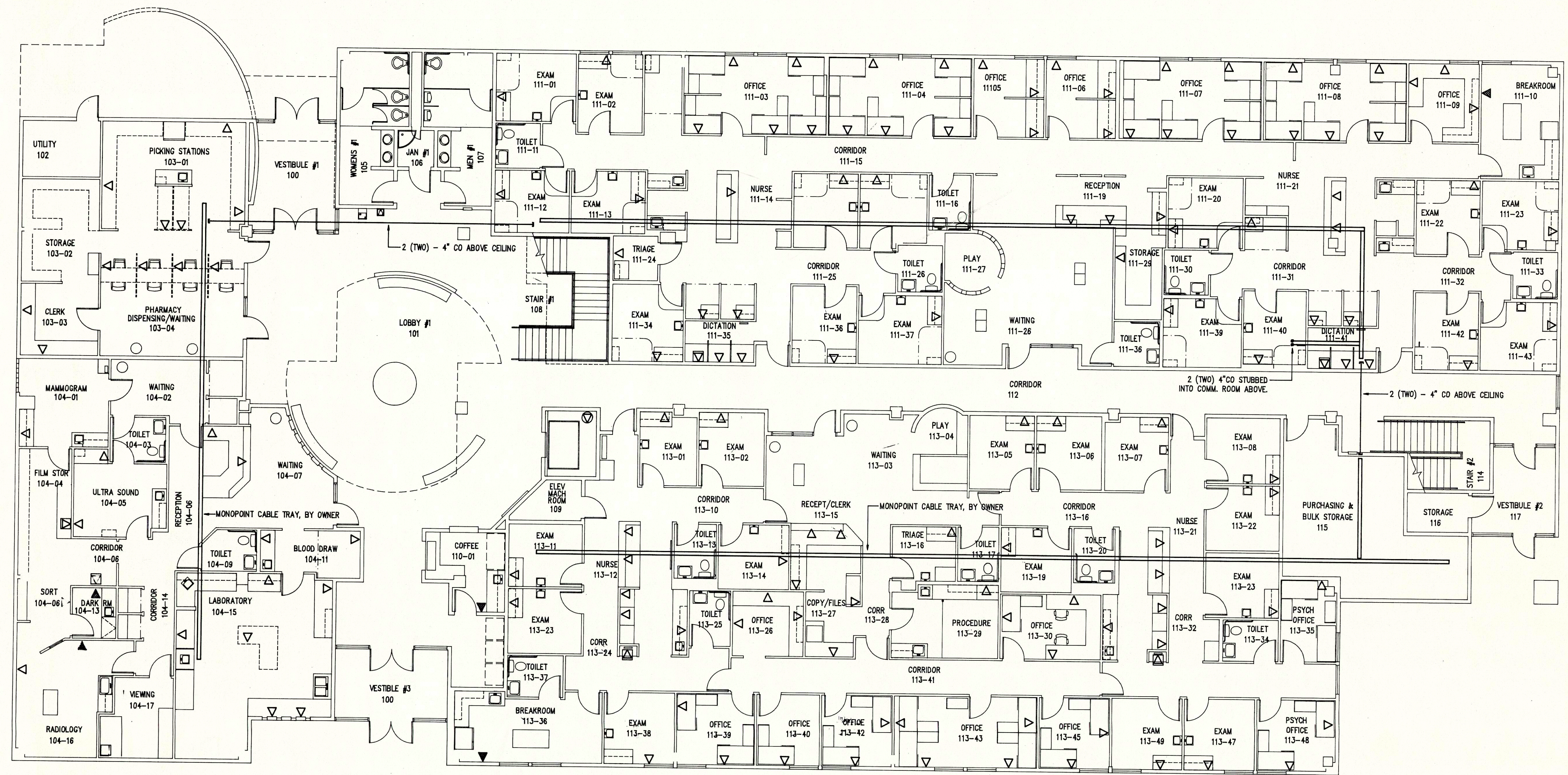
DRAWING DATE: 10/08/98

CAD FILENAME: ANC-MED1

CATEGORY: IC,SO

DRAWING NUMBER: ANC-MED-1





**FIRST FLOOR - COMMUNICATIONS**

SCALE: 1/8"=1'-0"

**LEGEND**

- ▽ QUAD CAT 5 OUTLET
- ▼ SINGLE OUTLET WALL PHONE
- ☒ DUPLEX CAT 5, DUPLEX MM FIBER W/ DUPLEX SC CONNECTS
- ⊙ ELEVATOR PHONE CONNECTION (CONNECTION BY OTHERS)

**GENERAL NOTES:**

1. ALL VOICE/DATA OUTLETS SHALL BE 3/4 IN. CONDUIT TO CABLE TRAY, STUBBED INTO CEILING SPACE.
2. ALL OUTLETS CONTAINING FIBER SHALL BE STUBBED 1 IN. CONDUIT STUBBED INTO CEILING SPACE.
3. ALL OUTLET BOXES TO BE 4" SQUARE DEEP WITH SINGLE GANG MUD RINGS.
4. TO AVOID E.M.I., ALL PATHWAYS SHOULD PROVIDE THE FOLLOWING CLEARANCES.
  - A) 4 FEET FROM MOTORS OR TRANSFORMERS.
  - B) 1 FOOT FROM CONDUIT & CABLES USED FOR ELECTRICAL POWER DISTRIBUTION.
  - C) 5 INCHES FROM FLUORESCENT OR HID LIGHTING FIXTURES.
  - D) PATHWAYS SHOULD CROSS PERPENDICULAR TO FLUORESCENT LIGHTING & ELECTRICAL POWER CABLES.

ANCHORAGE NATIVE MEDICAL OFFICE BUILDING  
ANCHORAGE, ALASKA

COMMUNICATIONS PLAN - 1ST FLOOR

JOB NO. 15098 DRAWING NO. 15098-1 DATE 12/02/96

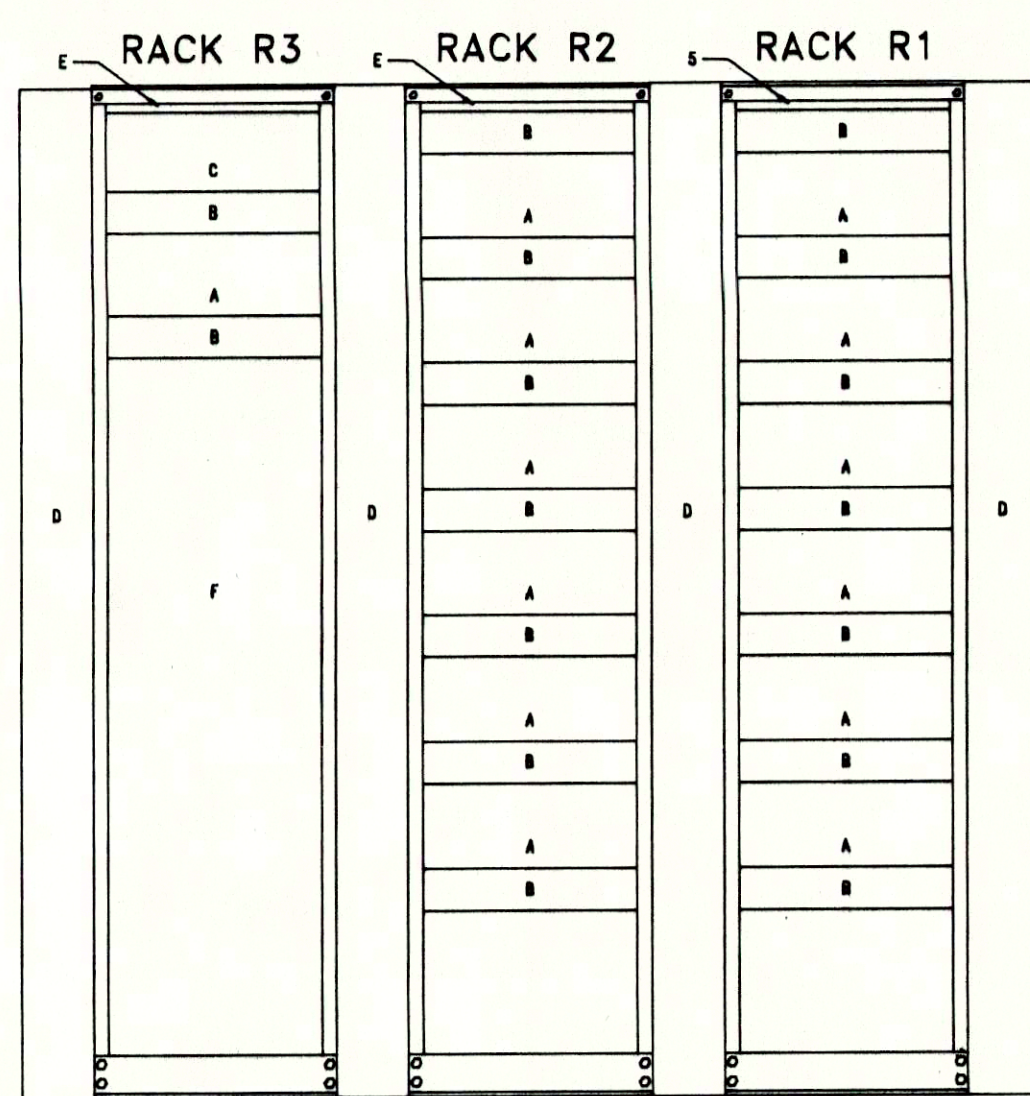
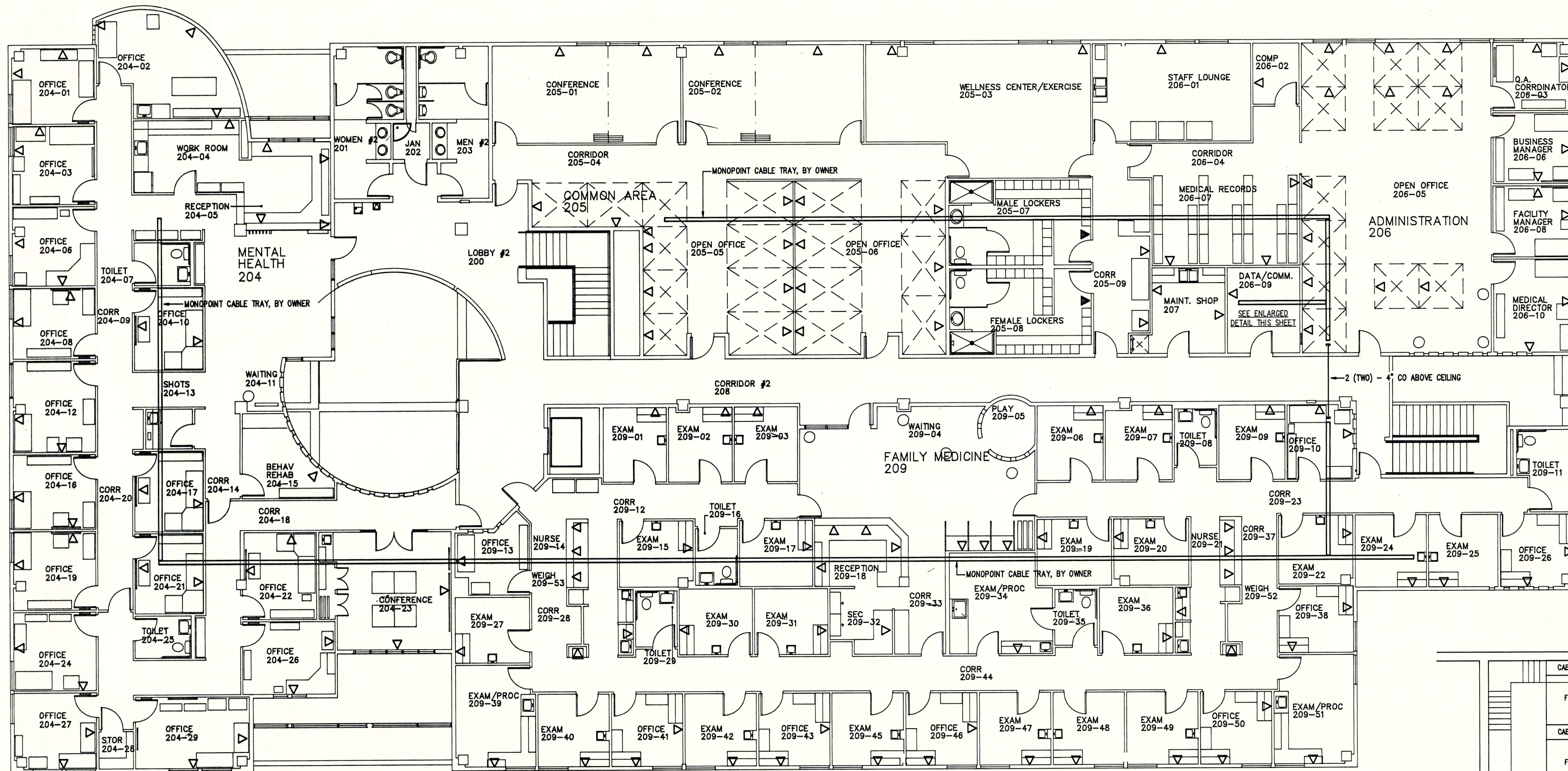
DRAWN BY DMF CHECKED BY SHEET OF

CONTRACTOR

**UNITEC CONSTRUCTION, INC.**

611 E. 12th AVENUE, SUITE 201  
ANCHORAGE, ALASKA 99501  
(907) 276-1718





- R1, R2 & R3 = CHATSWORTH 46353-503 UNIVERSAL SELF-SUPPORT RACK (19 DIA. RACK)
- A = 96 PORT 568A PATCH PANEL, KRONE 6653-1-701-96
- B = PATCH CORD / CABLE MANAGER, KRONE 6653-2-701-02
- C = RACK MOUNT FIBER TERMINATION CABINET, KRONE 6643-3-366-02
- D = CHATSWORTH 11729-503 VERTICAL RACK MANAGEMENT SYSTEM
- E = B-LINE SB-579-03 GROUND BAR, 2EA - 1 WITH SB-1154 ISOLATED STANDOFF
- F = RESERVED SPACE FOR OF/OI EQUIPMENT

**COMMUNICATIONS RACKS DETAIL**  
SCALE: 3/4"=1'-0"

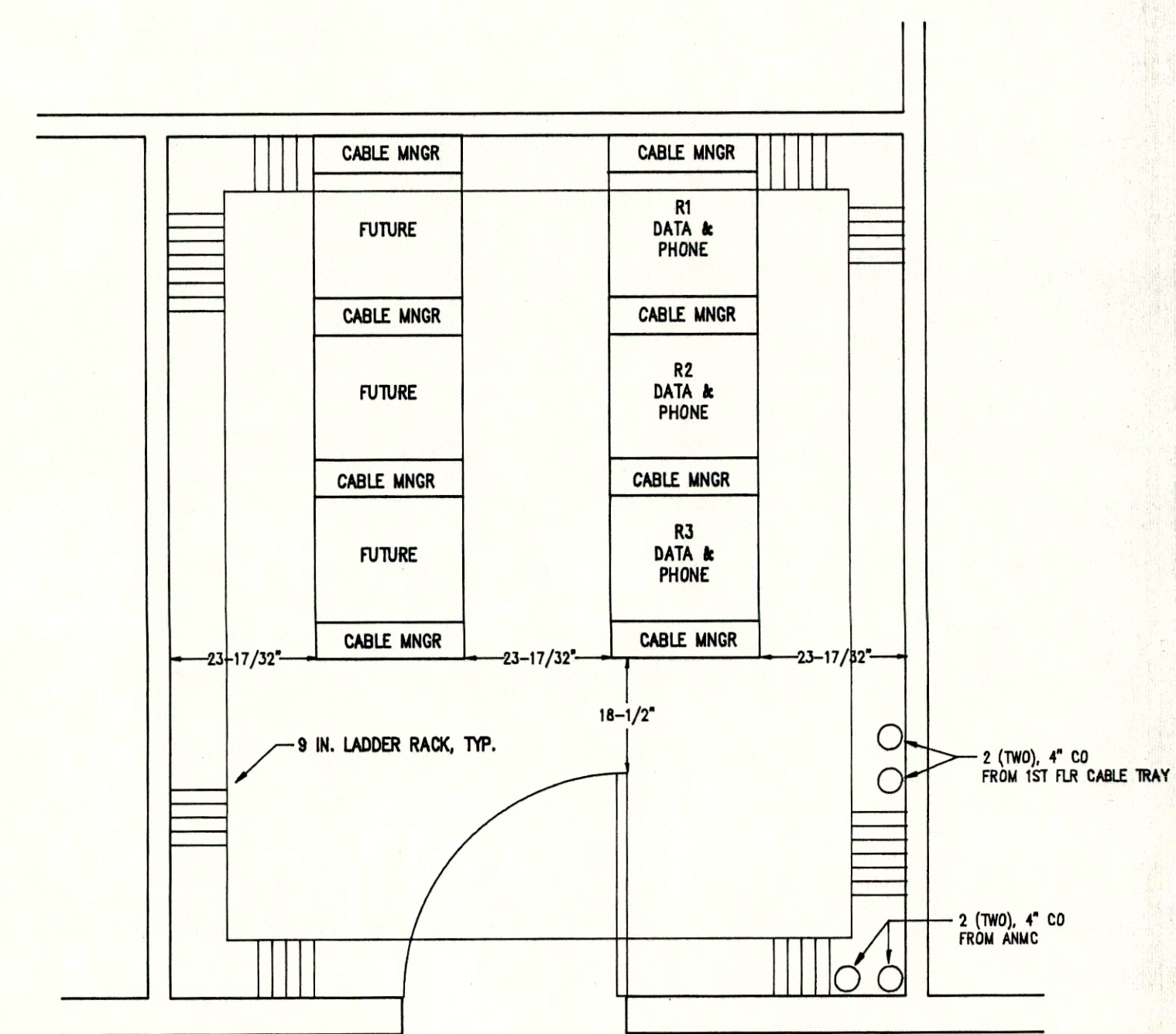


**SECOND FLOOR - COMMUNICATIONS**

SCALE: 1/8"=1'-0"

**LEGEND**

- ▽ QUAD CAT 5 OUTLET
- ▼ SINGLE OUTLET WALL PHONE
- ☑ DUPLEX CAT 5, DUPLEX MM FIBER-W/ DUPLEX SC CONNECTS
- ⊙ ELEVATOR PHONE CONNECTION



**ENLARGED VIEW COMM. ROOM**  
SCALE: 1/2"=1'-0"

ANCHORAGE NATIVE MEDICAL OFFICE BUILDING ANCHORAGE, ALASKA		
COMMUNICATIONS PLAN - 2ND FLOOR		
JOB NO. 15098	DRAWING NO. 15098-2	DATE 12/02/96
DRAWN BY DMF	CHECKED BY	SHEET OF
CONTRACTOR		
<b>UNITEC CONSTRUCTION, INC.</b>		
611 E. 12th AVENUE, SUITE 201 ANCHORAGE, ALASKA 99501 (907) 276-1718		



# ANCHORAGE NATIVE MEDICAL OFFICE BUILDING

**Architects: Koonce Pfeiffer, Inc.**  
745 West 4th Avenue Suite 400  
Anchorage, Alaska 99501  
Phone (907) 274-7443 Fax (907) 274-7407

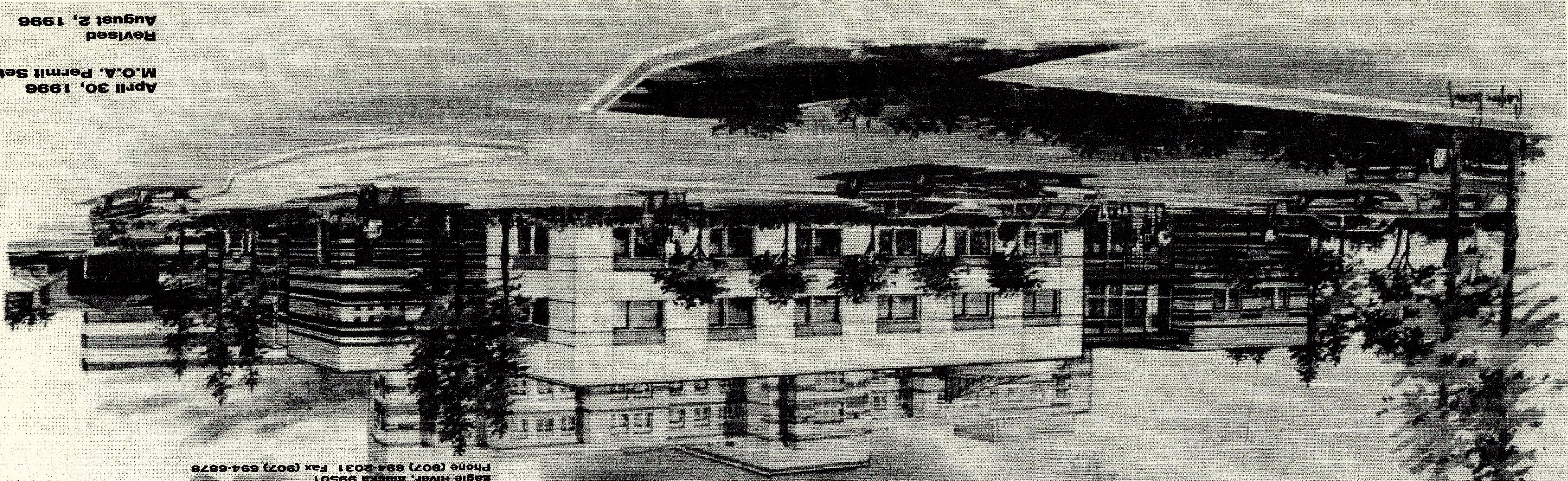
**Contractor: Neeser Construction, Inc.**  
2501 Blueberry Road  
Anchorage, Alaska 99503  
Phone (907) 276-1058 Fax (907) 276-8533

**Civil Engineer: Dowl Engineers**  
4040 B Street  
Anchorage, Alaska 99503  
Phone (907) 562-2000 Fax (907) 563-3953

**Structural Engineer: EDS**  
5125 Rio Pinar Drive  
Reno, Nevada 89509  
Phone (702) 826-9737 Fax (702) 826-9743

**Mechanical Engineer: Encon, Inc.**  
1520 Post Road  
Anchorage, Alaska 99501  
Phone (907) 276-5755 Fax (907) 279-1822

**Electrical Engineer: Bruce Mattson, P.E.**  
10818 Steeple Drive  
Eagle River, Alaska 99501  
Phone (907) 694-2031 Fax (907) 694-6878



April 30, 1996  
M.O.A. Permit Set  
Revised  
August 2, 1996



# SYMBOLS LEGEND

	STRUCTURAL OR REFERENCE GRIDS		REF. NORTH
	SECTIONS		DRAWING TITLE SCALE
	EXTERIOR ELEVATIONS (WHEN DESIRABLE)		ROOM TITLE 000
	DETAILS		DOORS
	INTERIOR ELEVATIONS		WINDOWS
	CUT LINE		RELITES
	REVISION SYMBOL & BUBBLE TO INDICATE EFFECTED AREA		EQUIPMENT
	FINISHED GRADE OR ELEVATION		
	EXISTING GRADE OR ELEVATION		

# CODE INFORMATION

THE 1994 EDITION OF THE UNIFORM BUILDING CODE WAS USED IN THE FOLLOWING ANALYSIS.

OCCUPANCY GROUP: B

TYPE OF CONSTRUCTION: TYPE II-N

ALLOWABLE AREA:

BASIC ALLOWABLE	12,000 S.F.
MULTI-STORY x 2	24,000 S.F.
SEPARATION 3 SIDES >60 FT x 2	48,000 S.F.

ACTUAL AREA: 38,740 S.F.

NUMBER OF STORIES: TWO

THE BUILDING WILL HAVE AN AUTOMATIC SPRINKLER SYSTEM THROUGHOUT.

OCCUPANT LOAD:

FIRST FLOOR

PHARMACY [103]	: 922 SF ÷ 100 = 10
DIAGNOSTIC SERVICES [104]	: 2212 SF ÷ 100 = 22
WOMEN'S CLINIC [111]	: 5679 SF ÷ 100 = 57
STAFF LOUNGE:	171 SF ÷ 15 = 11
	68

PEDIATRICS [113]	: 5227 SF ÷ 100 = 52
PURCHASING/BULK STORAGE [115]	: 471 SF ÷ 100 = 4

SECOND FLOOR

MENTAL HEALTH [204]:	
NORTH OF 1 HR WALL:	2868 SF ÷ 100 = 29
SOUTH OF 1 HR WALL:	1179 SF ÷ 100 = 12
CONFERENCE ROOM:	249 SF ÷ 15 = 17
	29

COMMON AREA [205]:	1842 SF ÷ 100 = 18
CONFERENCE ROOM:	328 SF ÷ 15 = 22
CONFERENCE ROOM:	341 SF ÷ 15 = 23

LOCKER ROOMS [205] & STAFF LOUNGE [206]:	
LOCKER ROOMS:	450 SF ÷ 50 = 9
STAFF LOUNGE:	287 SF ÷ 15 = 19
	28

ADMINISTRATION [206]:	2314 SF ÷ 100 = 23
FAMILY MEDICINE [209]:	6148 SF ÷ 100 = 61

# ABBREVIATIONS

A.F.F. ACQUIS	ACQUISITION	FIG	FIGURE	PR	PAIR
A.C.T.	ACQUISITION	FIN	FINISH(ED)	PLAS LAM	PLASTIC LAMINATE
ADDN	ADDITIONAL	F.F.E.	FINISHED FLOOR ELEVATION	PL	PLATE
ALUM	ALUMINUM	F.E.C.	FIRE EXTINGUISHER CABINET	PLYWD	PLYWOOD
A.B.	ANCHOR BOLT AND ANODIZED	F.T.	FIRE TREATED FLOOR	PRE ENG	PREVIOUSLY ENGINEERED
ANOD	ANODIZED	FLR	FLOOR	PSF	POUNDS PER SQUARE FOOT
APPROX	APPROXIMATELY	F.D.	FLOOR DRAIN	Q.T.	QUARRY TILE
ARCH	ARCHITECTURAL	F.L.	FLOOR LINE	RAD	RADIUS
ASPH	ASPHALT	FT	FOOT	REF	REFERENCE
@	AT	FTG	FOOTING	REINF	REINFORCING
BK	BACK	FDN	FOUNDATION	REQD	REQUIRED
B.C.	BASE CABINET	GALV	GALVANIZED	REV	REVERSED
BM	BEAM	GSP	GALVANIZED STEEL PIPE	RT	RIGHT
BLK	BLOCK	CLB	GLULAM BEAM	RM	ROOM
BLKG	BLOCKING	GOVT	GOVERNMENT	RGH	ROUGH
CAB	CABINET	G.B.	GRAB BAR	R.O.	ROUGH OPENING
CPT	CARPET	GR	GRADE	Ø	ROUND
CSMT	CASEMENT	GA	GAUGE	RBR	RUBBER
CLG	CEILING	GYP	GYP SUM	S.S.	SANITARY SEWER
CL	CENTERLINE	G.W.B.	GYP SUM WALL BOARD	SCHD	SCHEDULE
C TO C	CENTER TO CENTER	HC	HANDICAPPED	SECT	SECTION
C.T.	CERAMIC TILE	H.M.	HOLLOW METAL	SHT	SHEET
COL	COLUMN	HORIZ	HORIZONTAL	SHT VIN	SHEET VINYL
COMM	COMMUNICATION	H.B.	HOSE BIB	SIM	SIMILAR
CONC	CONCRETE	IN	INCH	S.B.	SINK BASE
C.M.U.	CONCRETE MASONRY UNITS	INCL	INCLUDE(ING)	S.D.	SMOKE DETECTOR
CONN	CONNECTION	INSUL	INSULATE(ION)	S.C.	SOLID CORE
C.J.	CONTROL JOINT OR CONSTRUCTION JOINT	INT	INTERIOR	S.C.W.	SOLID CORE WOOD
CONST	CONSTRUCTION	JAN	JANITOR	SPEC	SPECIFICATION
CONT	CONTINUOUS	JT	JOINT	SQ	SQUARE
CU	CUBIC	LAM	LAMINATE	SQ FT	SQUARE FEET
DK	DECK	LAV	LAVATORY	SST	STAINLESS STEEL
DEMO	DEMOLITION	LT	LEFT	STL	STEEL
DTL	DETAIL	LB	POUND	STRUC	STRUCTURAL
DIA	DIAMETER	LBR	LUMBER	SUSP	SUSPENDED
DIFF	DIFFUSER	M.O.	MASONRY OPENING	S.A.T.	SUSPENDED ACOUSTICAL TILE
DIM	DIMENSION	MFG	MANUFACTURER(ED)	TV	TELEVISION
DR	DOOR	MAX	MAXIMUM	TELE	TELEPHONE
DN	DOWN	MECH	MECHANICAL	THRU	THROUGH
DS	DOWNSPOUT	MEMB	MEMBRANE	T.I.	TENANT IMPROVEMENT
D.B.	DRAWER BANK	MWP	MEMBRANE WATER-PROOFING	T.O.	TOP OF
DWG	DRAWING	MTL	METAL	TS	TUBE STEEL
D.F.	DRINKING FOUNTAIN	MIN	MINIMUM	TYP	TYPICAL
EA	EACH	MIR	MIRROR	TRANSV	TRANSVERSE
E.W.	EACH WAY	MISC	MISCELLANEOUS	U.O.N.	UNLESS OTHERWISE NOTED
ELEC	ELECTRICAL	NOM	NOMINAL	VAC	VACUUM
EL	ELEVATION	N.A.	NOT APPLICABLE	V.B.	VAPOR BARRIER
EXIST	EXISTING	N.I.C.	NOT IN CONTRACT	VERT	VERTICAL
EXP	EXPANSION	N.T.S.	NOT TO SCALE	VFY	VERIFY
EXT	EXTERIOR	NO.	NUMBER	VEST	VESTIBULE
E.I.F.S.	EXTERIOR INSULATION & FINISH SYSTEM	#	NUMBER	V.C.T.	VINYL COMPOSITION TILE
FAB	FABRICATE	O.C.	ON CENTER	W.C.	WALL CABINET
F.O.C.	FACE OF CONCRETE	OPNG	OPENING	W.W.F.	WELDED WIRE FABRIC
F.O.F.	FACE OF FINISH	OPP	OPPOSITE	W.W.M.	WELDED WIRE MESH
F.O.S.	FACE OF STUDS	ORIG	ORIGINAL	W/	WITH
F.O.W.	FACE OF WALL	O/H	OVERHEAD	W/O	WITHOUT
F TO F	FACE TO FACE	OHD	OVERHEAD DOOR	WD	WOOD
F.F.	FACTORY FINISH				
F.E.	FIRE EXTINGUISHER				
F.P.	FIREPROOF				

# PROJECT DATA

<b>LEGAL DESCRIPTION</b>	TRACT C2 TUDOR CENTER SUBDIVISION ANCHORAGE, ALASKA
<b>LOT SIZE</b>	114,30 SF OR 2.624 ACRES
<b>ZONING</b>	B3
<b>SETBACKS</b>	FRONT YARD: 10 FEET SIDE YARD: 10 FEET REAR YARD: NONE
<b>MAXIMUM BUILDING HT:</b>	UNRESTRICTED
<b>MAXIMUM LOT COVERAGE:</b>	UNRESTRICTED
<b>REQUIRED PARKING:</b>	ONE PARKING SPACE PER 250 SQ FT OF GROSS BLDG AREA 38,750 ÷ 250 = 155 REQ. PARKING SPACES.
<b>ACCESSIBLE PARKING:</b>	A MINIMUM OF 5 OF THE 155 SPACES MUST BE ACCESSIBLE PLUS 1 VAN ACCESSIBLE SPACE.
<b>LOADING BERTH:</b>	PROVIDE 1 TYPE B LOADING BERTH 10 FT WIDE x 30 FT LONG x 14 FT HIGH.
<b>FIRE LANES:</b>	PROVIDE 20 FT WIDE FIRE LANES WITHIN 150 FT OF ALL BUILDINGS. MINIMUM INSIDE TURNING RADIUS OF ALL FIRE LANES TO BE 40 FT.

# DRAWING INDEX

## GENERAL

- COVER SHEET
- A1-1 INDEX SHEET

## CIVIL

- C1-1 NOTES, LEGEND, ABBREVIATIONS AND UTILITY DETAILS
- C1-2 SITE GRADING AND UTILITY PLAN
- C1-3 SITE SECTIONS AND DETAILS

## LANDSCAPE

- L1-1 LANDSCAPE PLAN
- L1-2 LANDSCAPE DETAILS

## ARCHITECTURAL

- A2-1 FIRST FLOOR PLAN - 1/8"
- A2-2 SECOND FLOOR PLAN - 1/8"
- A2-3 ROOF PLAN - 1/8"
- A2-4 FIRST FLOOR WEST SIDE T. I. PLAN - 3/16"
- A2-5 FIRST FLOOR EAST SIDE T. I. PLAN - 3/16"
- A2-6 SECOND FLOOR WEST SIDE T. I. PLAN - 3/16", PUBLIC TOILET PLANS - 1/4"
- A2-7 SECOND FLOOR EAST SIDE T. I. PLAN - 3/16"
- A2-8 FIRST FLOOR - FLOOR FINISH PLAN - 1/8"
- A2-9 SECOND FLOOR - FLOOR FINISH PLAN - 1/8"
- A2-10 FIRST FLOOR REFLECTED CEILING PLAN - 1/8"
- A2-11 SECOND FLOOR REFLECTED CEILING PLAN - 1/8"
- A2-12 ENLARGED PLAN OF CURVED WALL - 1/2"
- A2-13 ENLARGED NORTH ENTRY BRICK ELEVATION - 1/2"
- A3-1 FIRST FLOOR FINISH SCHEDULE
- A3-2 SECOND FLOOR FINISH SCHEDULE
- A3-3 FIRST FLOOR DOOR SCHEDULE
- A3-4 SECOND FLOOR DOOR SCHEDULE
- A3-5 DOOR, WINDOW, RELITE AND STOREFRONT TYPES

- A4-1 EXTERIOR ELEVATIONS - 1/8"
- A4-2 BUILDING SECTION, EXTERIOR CURVED WALL ELEVATION - 1/4"
- A4-3 BUILDING SECTION - 1/4"
- A5-1 EXTERIOR WALL SECTIONS - 1/2"
- A5-1a EXTERIOR WALL SECTION SHOWING E.I.F.S. - 1/2"
- A5-2 INTERIOR WALL AND STAIR SECTIONS - 1/2"

- A6-1 DETAILS
- A6-1a DETAILS SHOWING E.I.F.S.
- A6-2 DETAILS
- A6-2a DETAILS SHOWING E.I.F.S.
- A6-3 DETAILS
- A6-3a DETAILS SHOWING E.I.F.S.
- A6-4 DETAILS
- A6-5 DETAILS
- A7-1 INTERIOR PUBLIC LOBBY AND CORRIDOR ELEVATIONS - 1/4"
- A7-2 INTERIOR ELEVATIONS - 1/4"
- A7-3 INTERIOR ELEVATIONS - 1/4"
- A7-4 INTERIOR ELEVATIONS - 1/4"
- A7-5 INTERIOR ELEVATIONS - 1/4"
- A7-6 INTERIOR ELEVATIONS - 1/4"
- A7-7 INTERIOR PLANS, ELEVATIONS & DETAILS

## STRUCTURAL

- S-1 GENERAL NOTES
- S-2 FOUNDATION/FIRST FLOOR PLAN
- S-3 SECOND FLOOR FRAMING PLAN
- S-4 ROOF FRAMING PLAN
- S-5 FOUNDATION DETAILS AND SECTIONS
- S-6 FRAMING DETAILS
- S-7 TYPICAL WALL DETAILS
- S-8 MISCELLANEOUS FRAMING DETAILS

## MECHANICAL

- M1-1 MECHANICAL LEGEND AND SCHEDULES
- M1-2 MECHANICAL SCHEDULES
- M2-1 UNDERFLOOR PIPING PLAN
- M2-2 FIRST FLOOR PLAN - WASTE AND VENT PIPING
- M2-3 SECOND FLOOR PLAN - WASTE AND VENT PIPING
- M2-4 FIRST FLOOR PLAN - DOMESTIC WATER PIPING
- M2-5 SECOND FLOOR PLAN - DOMESTIC WATER PIPING
- M2-6 PLUMBING DETAILS
- M3-1 FIRST FLOOR PLAN - VENTILATION
- M3-2 SECOND FLOOR PLAN - VENTILATION
- M4-1 FIRST FLOOR PLAN - HVAC PIPING
- M4-2 SECOND FLOOR PLAN - HVAC PIPING
- M5-1 ROOF PLAN - PLUMBING AND HVAC
- M5-2 LARGE SCALE BOILER ROOM PLAN AND DETAILS

## ELECTRICAL

- E1-1 ELECTRICAL LEGEND AND DETAILS
- E1-2 POWER SINGLE LINE DIAGRAM
- E1-3 COMMUNICATION DIAGRAMS
- E1-4 SITE PLAN
- E1-5 PANEL SCHEDULES
- E1-6 PANEL SCHEDULES AND DETAILS
- E2-1 FIRST LEVEL LIGHTING PLAN
- E2-2 SECOND LEVEL LIGHTING PLAN
- E3-1 FIRST LEVEL POWER AND SIGNAL PLAN
- E3-2 SECOND LEVEL POWER AND SIGNAL PLAN
- E4-1 FIRST LEVEL FIRE ALARM PLAN
- E4-2 SECOND LEVEL FIRE ALARM PLAN
- E5-1 FIRST LEVEL SECURITY PLAN
- E5-2 SECOND LEVEL SECURITY PLAN

Anchorage Native Medical  
Office Building  
ANCHORAGE ALASKA

NEESER CONSTRUCTION INC.

ARCHITECTURE PLANNING AND INTERIOR DESIGN  
745 9th AVENUE SUITE 400 ANCHORAGE, ALASKA 99501  
(907) 274-7443 FAX (907) 274-7407

REVISIONS  
8/2/96

JOB NO. 95069  
DATE 4/30/96  
DRAWN JCB  
REVIEWED GLW

SYMBOLS  
CODE ANALYSIS  
DRAWING INDEX

SHEET NO.  
A1-1



