

SUBMITTAL / SHOP DRAWING REVIEW

No Exceptions Taken       Revise and Resubmit  
 Furnish as Corrected       Rejected

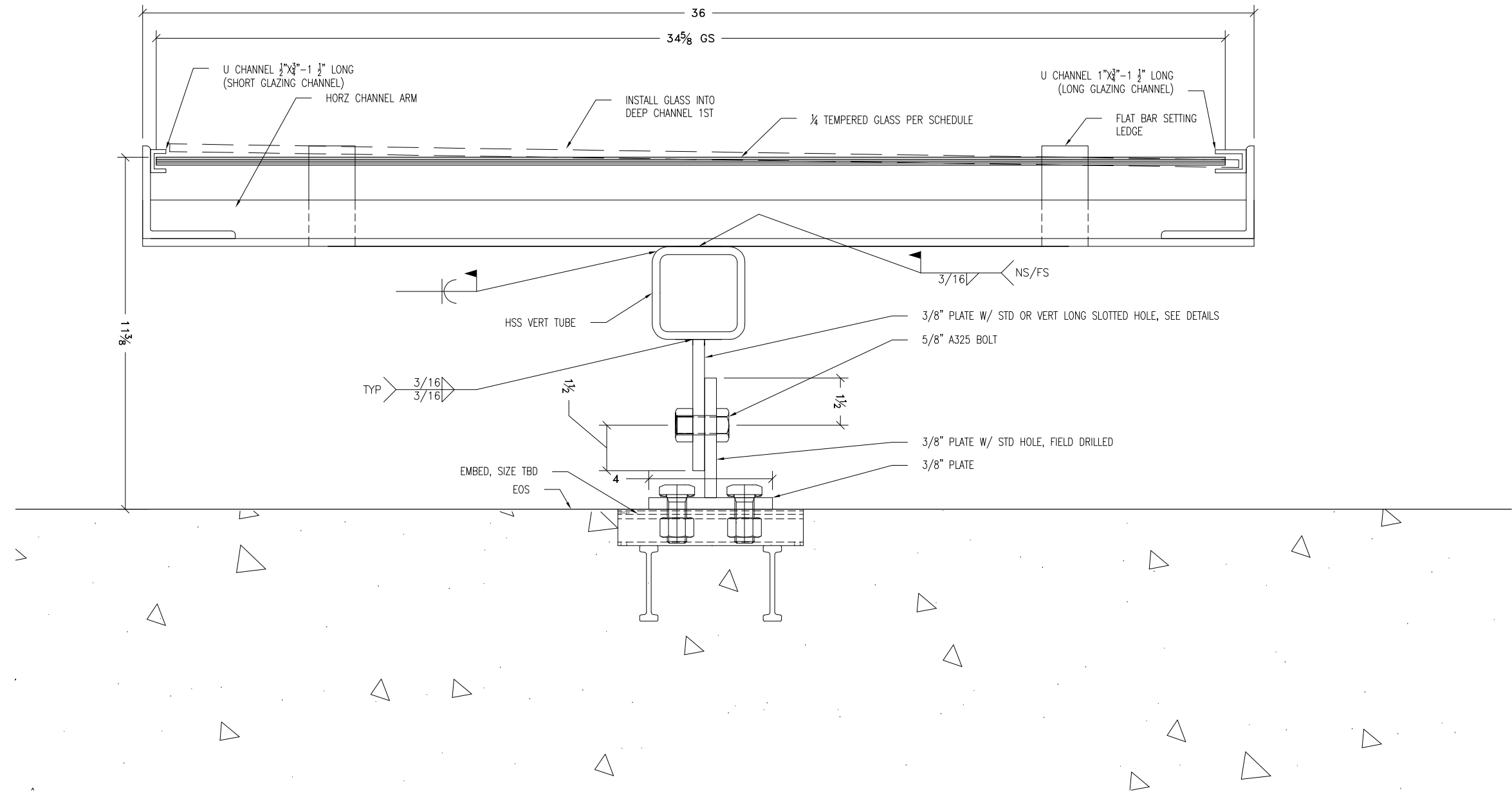
This review is only for general conformance with the design concept and general compliance with the contract documents. Corrections or comments made on the shop drawings during this review do not relieve contractor from compliance with the requirements of the contract documents. Review of a specific item shall not include review of an assembly of which the item is a component. Contractor is responsible for the following: dimensions to be confirmed and correlated at the job site; information that pertains solely to fabrication processes or to the means, methods, techniques and procedures of construction; coordination of its work and for performing all work in a safe and satisfactory manner.

REID MIDDLETON, INC.  
 By Seth Stapleton Date 8/24/17



**P | N | D**  
 ENGINEERS, INC

**ALASKA GLAZING INC.**  
 12100 Industry Way, Unit P7  
 Anchorage, AK 99515  
 Ph: (907) 770-0260  
 Fx: (907) 770-0261



**1 PLAN**  
 SCALE: 6"=1'-0"

PROJECT NAME AND ADDRESS:  
**CDCB GARAGE  
 GLASS FACADE SYSTEM**  
 Anchorage, Alaska

REV	DATE
1	3/20/2017

Job No:	XX
Date:	3/16/2017
Drawn By:	MM
Reviewed by:	XX

TITLE:  
**DETAILS**

SHEET:  
**A5.7**